



May 25, 2026

**IGI Report Number** LG794667932  
**CUT CORNERED RECTANGULAR  
MODIFIED BRILLIANT  
LABORATORY GROWN DIAMOND**  
**6.08 X 4.04 X 2.66 MM**

**Carat Weight** 0.58 CARAT  
**Color Grade** D  
**Clarity Grade** VVS 2  
**Polish** EXCELLENT  
**Symmetry** VERY GOOD  
**Fluorescence** NONE  
**Inscription(s)** IGI LG794667932

Comments: This Laboratory Grown Diamond was created by Chemical Vapor Deposition (CVD) growth process. Type IIa

**LABORATORY GROWN DIAMOND REPORT**

May 25, 2026

IGI Report Number

LG794667932

Description

LABORATORY GROWN DIAMOND

Shape and Cutting Style

CUT CORNERED RECTANGULAR MODIFIED  
BRILLIANT

Measurements

6.08 X 4.04 X 2.66 MM

**GRADING RESULTS**

Carat Weight

0.58 CARAT

Color Grade

D

Clarity Grade

VVS 2

**ADDITIONAL GRADING INFORMATION**

Polish

EXCELLENT

Symmetry

VERY GOOD

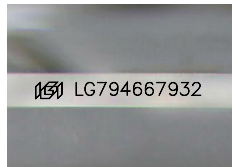
Fluorescence

NONE

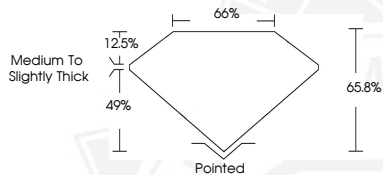
Inscription(s)

IGI LG794667932

Comments: This Laboratory Grown Diamond was created by Chemical Vapor Deposition (CVD) growth process. Type IIa



Sample Image Used



May 25, 2026

**IGI Report Number** LG794667932  
**CUT CORNERED RECTANGULAR  
MODIFIED BRILLIANT  
LABORATORY GROWN DIAMOND**  
**6.08 X 4.04 X 2.66 MM**

**Carat Weight** 0.58 CARAT  
**Color Grade** D  
**Clarity Grade** VVS 2  
**Polish** EXCELLENT  
**Symmetry** VERY GOOD  
**Fluorescence** NONE  
**Inscription(s)** IGI LG794667932

Comments: This Laboratory Grown Diamond was created by Chemical Vapor Deposition (CVD) growth process. Type IIa



THIS DOCUMENT WAS PRODUCED WITH THE FOLLOWING SECURITY MEASURES: SPECIAL DOCUMENT PAPER, INK SCREENS, WATERMARK, BACKGROUND DESIGNS, HOLOGRAM AND OTHER SECURITY FEATURES NOT LISTED AND DO EXCEED DOCUMENT SECURITY INDUSTRY GUIDELINES.