



ELECTRONIC COPY

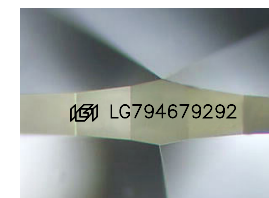
LG794679292
Report verification at igi.org



April 28, 2026
IGI Report Number **LG794679292**
Description **LABORATORY GROWN DIAMOND**

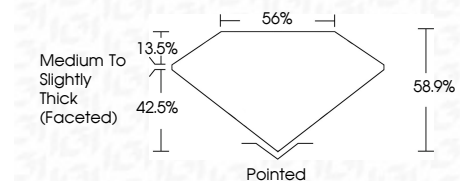
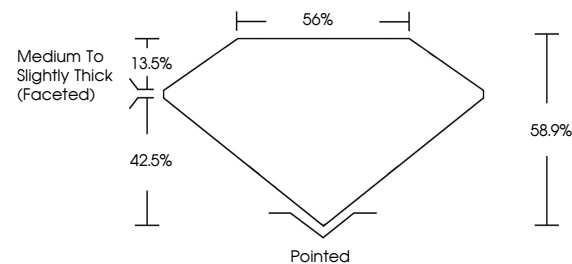
Shape and Cutting Style **HEART BRILLIANT**
Measurements **11.06 X 11.86 X 6.99 MM**

GRADING RESULTS
Carat Weight **5.08 CARATS**
Color Grade **D**
Clarity Grade **VVS 2**

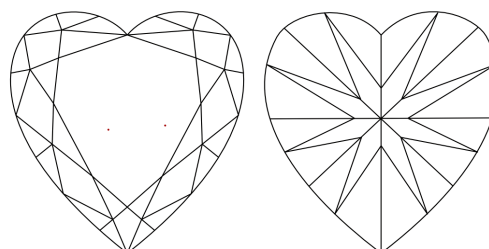


Sample Image Used

PROPORTIONS



CLARITY CHARACTERISTICS



KEY TO SYMBOLS

Red symbols indicate internal characteristics.
Green symbols indicate external characteristics.

COLOR

D E F G H I J Faint Very Light Light

CLARITY

FL	IF	VVS ¹⁻²	VS ¹⁻²	SI ¹⁻²	I ¹⁻³
Flawless	Internally Flawless	Very Very Slightly Included	Very Slightly Included	Slightly Included	Included

ADDITIONAL GRADING INFORMATION

Polish **EXCELLENT**
Symmetry **EXCELLENT**
Fluorescence **NONE**
Inscription(s) **IGI LG794679292**
Comments: This Laboratory Grown Diamond was created by Chemical Vapor Deposition (CVD) growth process. Type IIa



April 28, 2026
IGI Report No LG794679292
HEART BRILLIANT

5.08 CARATS
D

11.06 X 11.86 X 6.99 MM
Carat Weight
Color Grade
Clarity Grade
Depth
Table
Girdle
Medium to Slightly Thick (Faceted)

58.9%
65%

Pointed
EXCELLENT
EXCELLENT
NONE
IGI LG794679292

Culet
Polish
Symmetry
Fluorescence
Inscription(s)

Comments: This Laboratory Grown Diamond was created by Chemical Vapor Deposition (CVD) growth process. Type IIa