



ELECTRONIC COPY

LG794680328
Report verification at igi.org



May 6, 2026

IGI Report Number **LG794680328**

Description **LABORATORY GROWN DIAMOND**

Shape and Cutting Style **CUSHION BRILLIANT**

Measurements **9.85 X 7.09 X 4.98 MM**

GRADING RESULTS

Carat Weight **2.63 CARATS**

Color Grade **FANCY VIVID PINK**

Clarity Grade **VVS 1**

May 6, 2026
IGI Report Number **LG794680328**
Description **LABORATORY GROWN DIAMOND**
Shape and Cutting Style **CUSHION BRILLIANT**
Measurements **9.85 X 7.09 X 4.98 MM**

GRADING RESULTS

Carat Weight **2.63 CARATS**

Color Grade **FANCY VIVID PINK**

Clarity Grade **VVS 1**

ADDITIONAL GRADING INFORMATION

Polish **EXCELLENT**

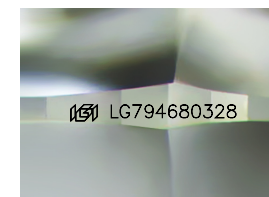
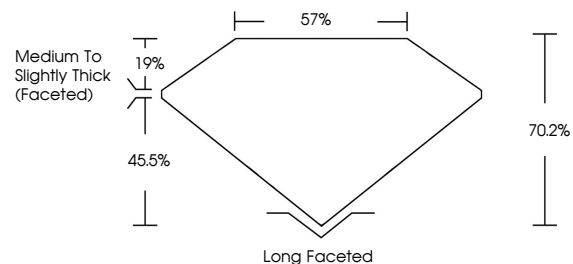
Symmetry **EXCELLENT**

Fluorescence **SLIGHT**

Inscription(s) **IGI LG794680328**

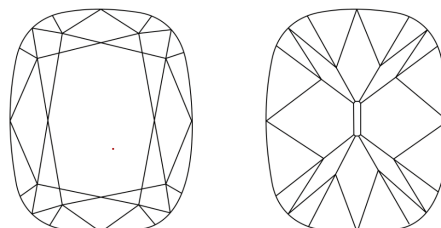
Comments: This Laboratory Grown Diamond was created by Chemical Vapor Deposition (CVD) growth process.
Indications of post-growth treatment.

PROPORTIONS



Sample Image Used

CLARITY CHARACTERISTICS



KEY TO SYMBOLS

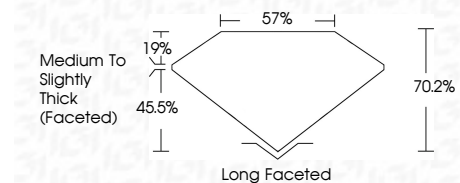
Red symbols indicate internal characteristics.
Green symbols indicate external characteristics.

COLOR

D E F G H I J Faint Very Light Light

CLARITY

FL	IF	VVS ¹⁻²	VS ¹⁻²	SI ¹⁻²	I ¹⁻³
Flawless	Internally Flawless	Very Very Slightly Included	Very Slightly Included	Slightly Included	Included



ADDITIONAL GRADING INFORMATION

Polish **EXCELLENT**

Symmetry **EXCELLENT**

Fluorescence **SLIGHT**

Inscription(s) **IGI LG794680328**

Comments: This Laboratory Grown Diamond was created by Chemical Vapor Deposition (CVD) growth process.
Indications of post-growth treatment.



IGI



May 6, 2026
IGI Report No LG794680328
CUSHION BRILLIANT
9.85 X 7.09 X 4.98 MM
2.63 CARATS
FANCY VIVID PINK
VVS 1
70.2%
57%
Medium to Slightly Thick (Faceted)
Long Faceted
EXCELLENT
EXCELLENT
SLIGHT
IGI LG794680328
Comments: This Laboratory Grown Diamond was created by Chemical Vapor Deposition (CVD) growth process.
Indications of post-growth treatment.