



**INTERNATIONAL
GEMOLOGICAL
INSTITUTE**

ELECTRONIC COPY



April 29, 2026

IGI Report Number **LG794680480**
**SQUARE CUSHION MODIFIED
BRILLIANT**

LABORATORY GROWN DIAMOND

4.65 X 4.57 X 3.26 MM

Carat Weight **0.69 CARAT**

Color Grade **FANCY VIVID BLUISH**

Clarity Grade **GREEN**

Polish **VVS 2**

Symmetry **VERY GOOD**

Fluorescence **VERY GOOD**

Inscription(s) **NONE**

Inscription(s) **IGI LG794680480**

Comments: This Laboratory Grown Diamond was created by High Pressure High Temperature (HPHT) growth process. Indications of post-growth treatment.

LABORATORY GROWN DIAMOND REPORT

April 29, 2026

IGI Report Number

LG794680480

Description

LABORATORY GROWN DIAMOND

Shape and Cutting Style

SQUARE CUSHION MODIFIED BRILLIANT

Measurements

4.65 X 4.57 X 3.26 MM

GRADING RESULTS

Carat Weight

0.69 CARAT

Color Grade

FANCY VIVID BLUISH GREEN

Clarity Grade

VVS 2

ADDITIONAL GRADING INFORMATION

Polish

VERY GOOD

Symmetry

VERY GOOD

Fluorescence

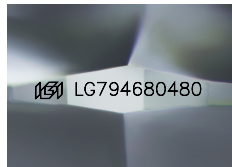
NONE

Inscription(s)

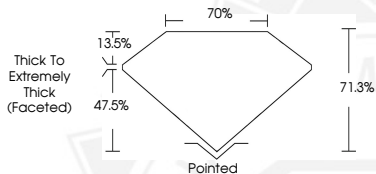
IGI LG794680480

Comments: This Laboratory Grown Diamond was created by High Pressure High Temperature (HPHT) growth process.

Indications of post-growth treatment.



Sample Image Used



April 29, 2026

IGI Report Number **LG794680480**
**SQUARE CUSHION MODIFIED
BRILLIANT**

LABORATORY GROWN DIAMOND

4.65 X 4.57 X 3.26 MM

Carat Weight **0.69 CARAT**

Color Grade **FANCY VIVID BLUISH**

Clarity Grade **GREEN**

Polish **VVS 2**

Symmetry **VERY GOOD**

Fluorescence **VERY GOOD**

Inscription(s) **NONE**

Inscription(s) **IGI LG794680480**

Comments: This Laboratory Grown Diamond was created by High Pressure High Temperature (HPHT) growth process. Indications of post-growth treatment.



THIS DOCUMENT WAS PRODUCED WITH THE FOLLOWING SECURITY MEASURES: SPECIAL DOCUMENT PAPER, INK SCREENS, WATERMARK, BACKGROUND DESIGNS, HOLOGRAM AND OTHER SECURITY FEATURES NOT LISTED AND DO EXCEED DOCUMENT SECURITY INDUSTRY GUIDELINES.

For terms & conditions and to verify this report, please visit www.igi.org