



May 8, 2026

IGI Report Number LG794682735
ROUND BRILLIANT
LABORATORY GROWN DIAMOND
5.64 - 5.68 X 3.36 MM

Carat Weight 0.65 CARAT
Color Grade FANCY INTENSE YELLOW
Clarity Grade VVS 1
Cut Grade IDEAL
Polish EXCELLENT
Symmetry EXCELLENT
Fluorescence NONE
Inscription(s) IGI LG794682735

Comments: As Grown - No indication of post-growth treatment. This Laboratory Grown Diamond was created by High Pressure High Temperature (HPHT) growth process.

LABORATORY GROWN DIAMOND REPORT

May 8, 2026
IGI Report Number **LG794682735**
Description **LABORATORY GROWN DIAMOND**
Shape and Cutting Style **ROUND BRILLIANT**
Measurements **5.64 - 5.68 X 3.36 MM**

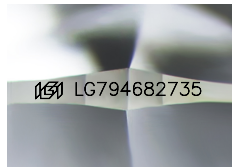
GRADING RESULTS

Carat Weight 0.65 CARAT
Color Grade FANCY INTENSE YELLOW
Clarity Grade VVS 1
Cut Grade IDEAL

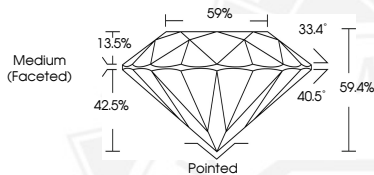
ADDITIONAL GRADING INFORMATION

Polish EXCELLENT
Symmetry EXCELLENT
Fluorescence NONE
Inscription(s) IGI LG794682735

Comments: As Grown - No indication of post-growth treatment. This Laboratory Grown Diamond was created by High Pressure High Temperature (HPHT) growth process.



Sample Image Used



May 8, 2026

IGI Report Number LG794682735
ROUND BRILLIANT
LABORATORY GROWN DIAMOND
5.64 - 5.68 X 3.36 MM

Carat Weight 0.65 CARAT
Color Grade FANCY INTENSE YELLOW
Clarity Grade VVS 1
Cut Grade IDEAL
Polish EXCELLENT
Symmetry EXCELLENT
Fluorescence NONE
Inscription(s) IGI LG794682735

Comments: As Grown - No indication of post-growth treatment. This Laboratory Grown Diamond was created by High Pressure High Temperature (HPHT) growth process.



THIS DOCUMENT WAS PRODUCED WITH THE FOLLOWING SECURITY MEASURES: SPECIAL DOCUMENT PAPER, INK SCREENS, WATERMARK, BACKGROUND DESIGNS, HOLOGRAM AND OTHER SECURITY FEATURES NOT LISTED AND DO EXCEED DOCUMENT SECURITY INDUSTRY GUIDELINES.