



**ELECTRONIC COPY**

LG794685129  
Report verification at igi.org



May 4, 2026

IGI Report Number **LG794685129**

Description **LABORATORY GROWN DIAMOND**

Shape and Cutting Style **ROUND BRILLIANT**

Measurements **6.46 - 6.49 X 4.00 MM**

**GRADING RESULTS**

Carat Weight **1.03 CARAT**

Color Grade **D**

Clarity Grade **VVS 2**

Cut Grade **IDEAL**

May 4, 2026

IGI Report Number **LG794685129**

Description **LABORATORY GROWN DIAMOND**

Shape and Cutting Style **ROUND BRILLIANT**

Measurements **6.46 - 6.49 X 4.00 MM**

**GRADING RESULTS**

Carat Weight **1.03 CARAT**

Color Grade **D**

Clarity Grade **VVS 2**

Cut Grade **IDEAL**

**ADDITIONAL GRADING INFORMATION**

Polish **EXCELLENT**

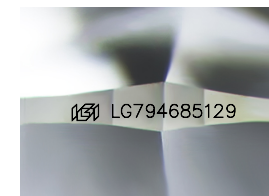
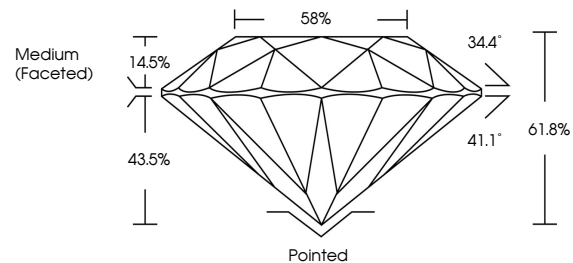
Symmetry **EXCELLENT**

Fluorescence **NONE**

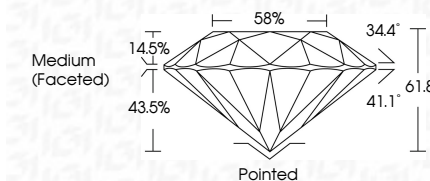
Inscription(s) **LG794685129**

Comments: This Laboratory Grown Diamond was created by Chemical Vapor Deposition (CVD) growth process. Type IIa

**PROPORTIONS**



Sample Image Used



**COLOR**

D E F G H I J Faint Very Light Light

**CLARITY**

| FL       | IF                  | VS <sup>1-2</sup>           | VS <sup>1-2</sup>      | SI <sup>1-2</sup> | I <sup>1-3</sup> |
|----------|---------------------|-----------------------------|------------------------|-------------------|------------------|
| Flawless | Internally Flawless | Very Very Slightly Included | Very Slightly Included | Slightly Included | Included         |

**ADDITIONAL GRADING INFORMATION**

Polish **EXCELLENT**

Symmetry **EXCELLENT**

Fluorescence **NONE**

Inscription(s) **LG794685129**

Comments: This Laboratory Grown Diamond was created by Chemical Vapor Deposition (CVD) growth process. Type IIa



**IGI**



|                 |                           |               |                  |   |
|-----------------|---------------------------|---------------|------------------|---|
| May 4, 2026     | IGI Report No LG794685129 | 1.03 CARAT    | D                | Pointed   |
| ROUND BRILLIANT | 6.46 - 6.49 X 4.00 MM     | VVS 2         | IDEAL            | EXCELLENT   |
| Carat Weight    | Color Grade               | Clarity Grade | Depth            | Symmetry  |
| 1.03            | D                         | VVS 2         | 61.8%            | EXCELLENT   |
|                 |                           |               | Table            | Fluorescence  |
|                 |                           |               | Girdle           | NONE  |
|                 |                           |               | Medium (Faceted) | Inscription(s)  |
|                 |                           |               |                  | LG794685129   |
|                 |                           |               |                  | Comments: This Laboratory Grown Diamond was created by Chemical Vapor Deposition (CVD) growth process. Type IIa |