



ELECTRONIC COPY

LG794687016
Report verification at igi.org



May 4, 2026

IGI Report Number **LG794687016**

Description **LABORATORY GROWN DIAMOND**

Shape and Cutting Style **ROUND BRILLIANT**

Measurements **6.33 - 6.38 X 4.03 MM**

GRADING RESULTS

Carat Weight **1.00 CARAT**

Color Grade **E**

Clarity Grade **VVS 2**

Cut Grade **EXCELLENT**

May 4, 2026

IGI Report Number **LG794687016**

Description **LABORATORY GROWN DIAMOND**

Shape and Cutting Style **ROUND BRILLIANT**

Measurements **6.33 - 6.38 X 4.03 MM**

GRADING RESULTS

Carat Weight **1.00 CARAT**

Color Grade **E**

Clarity Grade **VVS 2**

Cut Grade **EXCELLENT**

ADDITIONAL GRADING INFORMATION

Polish **EXCELLENT**

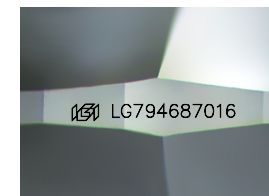
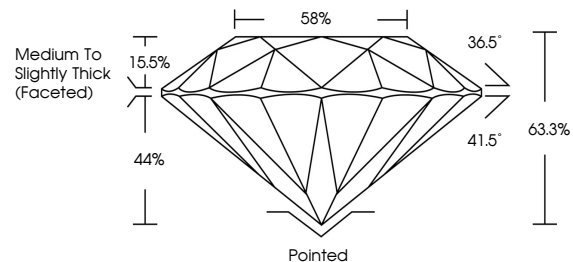
Symmetry **EXCELLENT**

Fluorescence **NONE**

Inscription(s) **IGI LG794687016**

Comments: This Laboratory Grown Diamond was created by Chemical Vapor Deposition (CVD) growth process. Type IIa

PROPORTIONS



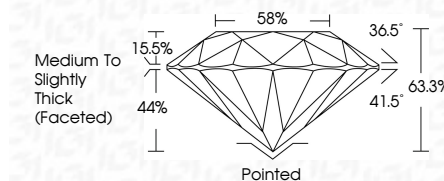
Sample Image Used

COLOR

D E F G H I J Faint Very Light Light

CLARITY

FL	IF	VVS ¹⁻²	VS ¹⁻²	SI ¹⁻²	I ¹⁻³
Flawless	Internally Flawless	Very Very Slightly Included	Very Slightly Included	Slightly Included	Included



ADDITIONAL GRADING INFORMATION

Polish **EXCELLENT**

Symmetry **EXCELLENT**

Fluorescence **NONE**

Inscription(s) **IGI LG794687016**

Comments: This Laboratory Grown Diamond was created by Chemical Vapor Deposition (CVD) growth process. Type IIa



May 4, 2026	IGI Report No LG794687016	1.00 CARAT	E	EXCELLENT	EXCELLENT	NONE	IGI LG794687016
ROUND BRILLIANT	6.33 - 6.38 X 4.03 MM	1.00 CARAT	VVS 2	EXCELLENT	EXCELLENT	NONE	IGI LG794687016
Carat Weight	Color Grade	Clarity Grade	Depth	Table	Girdle	Culet	Polish
1.00 CARAT	E	VVS 2	63.3%	88%	Medium To Slightly Thick (Faceted)	Pointed	EXCELLENT
		EXCELLENT				EXCELLENT	EXCELLENT
							EXCELLENT
							NONE
							NONE
							IGI LG794687016

Comments: This Laboratory Grown Diamond was created by Chemical Vapor Deposition (CVD) growth process. Type IIa