



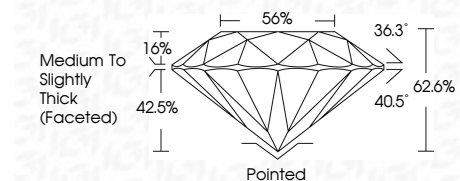
ELECTRONIC COPY

LG794687034 Report verification at igi.org



May 4, 2026 IGI Report Number LG794687034 Description LABORATORY GROWN DIAMOND Shape and Cutting Style ROUND BRILLIANT Measurements 6.38 - 6.42 X 4.00 MM

GRADING RESULTS Carat Weight 1.02 CARAT Color Grade E Clarity Grade VS 2 Cut Grade EXCELLENT

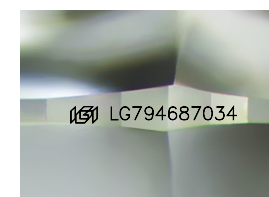


ADDITIONAL GRADING INFORMATION Polish EXCELLENT Symmetry EXCELLENT Fluorescence NONE Inscription(s) LG794687034 Comments: As Grown - No indication of post-growth treatment. This Laboratory Grown Diamond was created by High Pressure High Temperature (HPHT) growth process. Type II



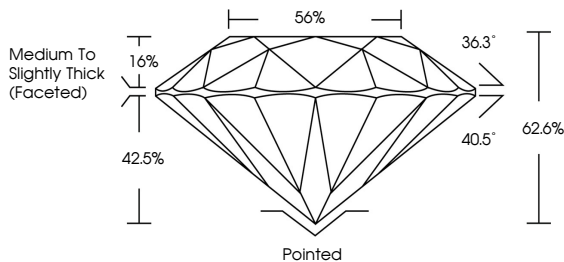
May 4, 2026 IGI Report No LG794687034 ROUND BRILLIANT 6.38 - 6.42 X 4.00 MM 1.02 CARAT E VS 2 EXCELLENT 62.6% 56% Medium To Slightly Thick (Faceted) Pointed EXCELLENT EXCELLENT NONE NONE LG794687034

Comments: As Grown - No indication of post-growth treatment. This Laboratory Grown Diamond was created by High Pressure High Temperature (HPHT) growth process. Type II

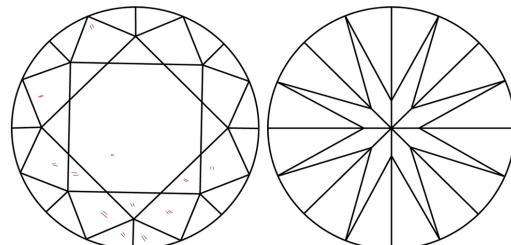


Sample Image Used

PROPORTIONS



CLARITY CHARACTERISTICS



KEY TO SYMBOLS Red symbols indicate internal characteristics. Green symbols indicate external characteristics.

COLOR

Color scale table with categories D, E, F, G, H, I, J, Faint, Very Light, Light.

CLARITY

Clarity scale table with categories FL, IF, VS 1-2, VS 1-2, SI 1-2, I 1-3, Flawless, Internally Flawless, Very Very Slightly Included, Very Slightly Included, Slightly Included, Included.



May 4, 2026 IGI Report Number LG794687034 Description LABORATORY GROWN DIAMOND Shape and Cutting Style ROUND BRILLIANT Measurements 6.38 - 6.42 X 4.00 MM

GRADING RESULTS Carat Weight 1.02 CARAT Color Grade E Clarity Grade VS 2 Cut Grade EXCELLENT

ADDITIONAL GRADING INFORMATION Polish EXCELLENT Symmetry EXCELLENT Fluorescence NONE Inscription(s) LG794687034

Comments: As Grown - No indication of post-growth treatment. This Laboratory Grown Diamond was created by High Pressure High Temperature (HPHT) growth process. Type II

