



ELECTRONIC COPY

LG794689321
Report verification at igi.org



April 22, 2026

IGI Report Number **LG794689321**

Description **LABORATORY GROWN DIAMOND**

Shape and Cutting Style **CUT CORNERED
RECTANGULAR MODIFIED
BRILLIANT**

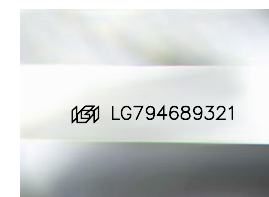
Measurements **7.12 X 4.99 X 3.35 MM**

GRADING RESULTS

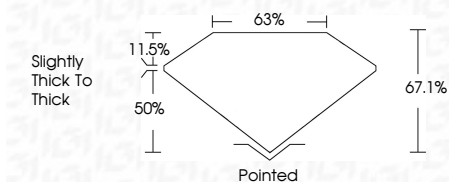
Carat Weight **1.02 CARAT**

Color Grade **E**

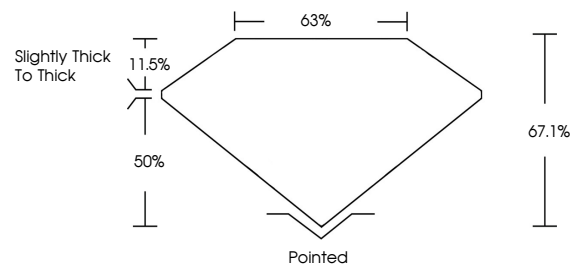
Clarity Grade **VVS 2**



Sample Image Used



PROPORTIONS



COLOR

D E F G H I J Faint Very Light Light

CLARITY

FL	IF	VVS ¹⁻²	VS ¹⁻²	SI ¹⁻²	I ¹⁻³
Flawless	Internally Flawless	Very Very Slightly Included	Very Slightly Included	Slightly Included	Included

ADDITIONAL GRADING INFORMATION

Polish **EXCELLENT**

Symmetry **EXCELLENT**

Fluorescence **NONE**

Inscription(s) **IGI LG794689321**

Comments: This Laboratory Grown Diamond was created by Chemical Vapor Deposition (CVD) growth process. Type IIa



IGI



April 22, 2026
IGI Report No LG794689321
CUT CORNERED RECT. MODIFIED BRILLIANT
7.12 X 4.99 X 3.35 MM
Carat Weight 1.02 CARAT
Color Grade E
Clarity Grade VVS 2
Table 63%
Depth 50%
Girdle 11.5%
Slightly thick to thick
Culet Pointed
Polish EXCELLENT
Symmetry EXCELLENT
Fluorescence NONE
Inscription(s) IGI LG794689321
Comments: This Laboratory Grown Diamond was created by Chemical Vapor Deposition (CVD) growth process. Type IIa