



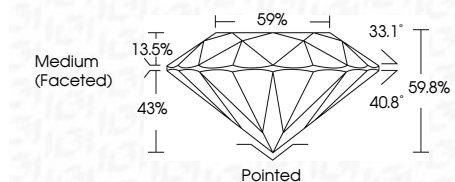
ELECTRONIC COPY

LG794692004
Report verification at igi.org



April 23, 2026
IGI Report Number **LG794692004**
Description **LABORATORY GROWN DIAMOND**
Shape and Cutting Style **ROUND BRILLIANT**
Measurements **8.82 - 8.86 X 5.29 MM**

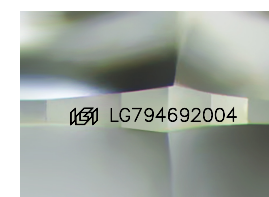
GRADING RESULTS
Carat Weight **2.51 CARATS**
Color Grade **E**
Clarity Grade **VVS 2**
Cut Grade **IDEAL**



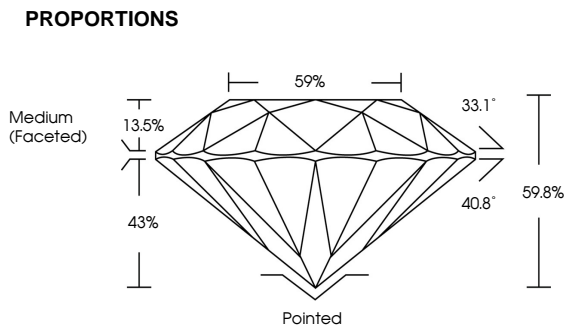
ADDITIONAL GRADING INFORMATION
Polish **EXCELLENT**
Symmetry **EXCELLENT**
Fluorescence **NONE**
Inscription(s) **IGI LG794692004**
Comments: This Laboratory Grown Diamond was created by Chemical Vapor Deposition (CVD) growth process. Type IIa



April 23, 2026
IGI Report No **LG794692004**
ROUND BRILLIANT
8.82 - 8.86 X 5.29 MM
2.51 CARATS
E
VVS 2
IDEAL
59.8%
59%
Medium (Faceted)
Pointed
EXCELLENT
EXCELLENT
NONE
IGI LG794692004
Comments: This Laboratory Grown Diamond was created by Chemical Vapor Deposition (CVD) growth process. Type IIa



Sample Image Used



COLOR

D	E	F	G	H	I	J	Faint	Very Light	Light
---	---	---	---	---	---	---	-------	------------	-------

CLARITY

FL	IF	VVS ¹⁻²	VS ¹⁻²	SI ¹⁻²	I ¹⁻³
Flawless	Internally Flawless	Very Very Slightly Included	Very Slightly Included	Slightly Included	Included



April 23, 2026
IGI Report Number **LG794692004**
Description **LABORATORY GROWN DIAMOND**
Shape and Cutting Style **ROUND BRILLIANT**
Measurements **8.82 - 8.86 X 5.29 MM**
GRADING RESULTS
Carat Weight **2.51 CARATS**
Color Grade **E**
Clarity Grade **VVS 2**
Cut Grade **IDEAL**
ADDITIONAL GRADING INFORMATION
Polish **EXCELLENT**
Symmetry **EXCELLENT**
Fluorescence **NONE**
Inscription(s) **IGI LG794692004**
Comments: This Laboratory Grown Diamond was created by Chemical Vapor Deposition (CVD) growth process. Type IIa