



ELECTRONIC COPY

LG794697012 Report verification at igi.org



May 11, 2026

IGI Report Number LG794697012

Description LABORATORY GROWN DIAMOND

Shape and Cutting Style SQUARE CUSHION MODIFIED BRILLIANT

Measurements 8.70 X 8.44 X 5.52 MM

GRADING RESULTS

Carat Weight 3.14 CARATS

Color Grade D

Clarity Grade FLAWLESS

Cut Grade EXCELLENT

LABORATORY GROWN DIAMOND REPORT

May 11, 2026

IGI Report Number LG794697012

Description LABORATORY GROWN DIAMOND

Shape and Cutting Style SQUARE CUSHION MODIFIED BRILLIANT

Measurements 8.70 X 8.44 X 5.52 MM

GRADING RESULTS

Carat Weight 3.14 CARATS

Color Grade D

Clarity Grade FLAWLESS

Cut Grade EXCELLENT

ADDITIONAL GRADING INFORMATION

Polish EXCELLENT

Symmetry EXCELLENT

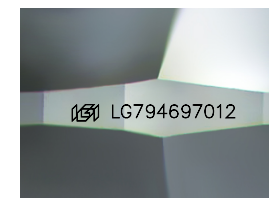
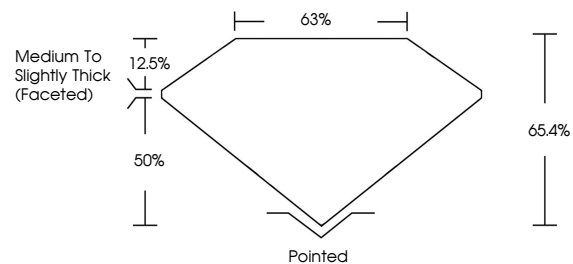
Fluorescence NONE

Inscription(s) IGI LG794697012

Comments: As Grown - No indication of post-growth treatment.

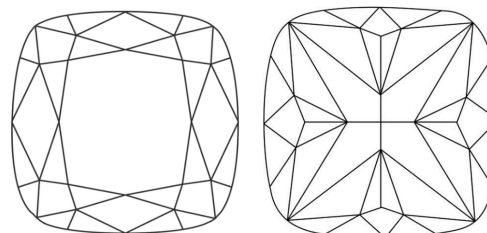
This Laboratory Grown Diamond was created by High Pressure High Temperature (HPHT) growth process. Type II

PROPORTIONS



Sample Image Used

CLARITY CHARACTERISTICS



KEY TO SYMBOLS

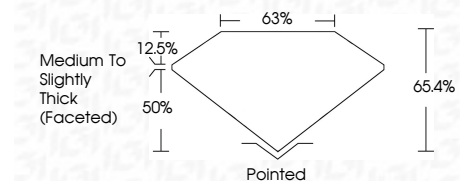
Red symbols indicate internal characteristics. Green symbols indicate external characteristics.

COLOR

D E F G H I J Faint Very Light Light

CLARITY

FL IF VS 1-2 VS 1-2 SI 1-2 I 1-3 Flawless Internally Flawless Very Very Slightly Included Very Slightly Included Slightly Included Included



ADDITIONAL GRADING INFORMATION

Polish EXCELLENT

Symmetry EXCELLENT

Fluorescence NONE

Inscription(s) IGI LG794697012

Comments: As Grown - No indication of post-growth treatment.

This Laboratory Grown Diamond was created by High Pressure High Temperature (HPHT) growth process. Type II



IGI



Table with 10 columns: Date, Report No, Description, Carat Weight, Color Grade, Clarity Grade, Depth, Table, Girdle, and Cut. Includes a QR code and additional grading information.

Comments: As Grown - No indication of post-growth treatment. This Laboratory Grown Diamond was created by High Pressure High Temperature (HPHT) growth process. Type II