



ELECTRONIC COPY

LG795612843
Report verification at igi.org



May 8, 2026

IGI Report Number **LG795612843**

Description **LABORATORY GROWN DIAMOND**

Shape and Cutting Style **PRINCESS CUT**

Measurements **7.40 X 7.37 X 5.46 MM**

GRADING RESULTS

Carat Weight **2.68 CARATS**

Color Grade **FANCY VIVID PINK**

Clarity Grade **VVS 2**

May 8, 2026
IGI Report Number **LG795612843**
Description **LABORATORY GROWN DIAMOND**
Shape and Cutting Style **PRINCESS CUT**
Measurements **7.40 X 7.37 X 5.46 MM**

GRADING RESULTS

Carat Weight **2.68 CARATS**

Color Grade **FANCY VIVID PINK**

Clarity Grade **VVS 2**

ADDITIONAL GRADING INFORMATION

Polish **EXCELLENT**

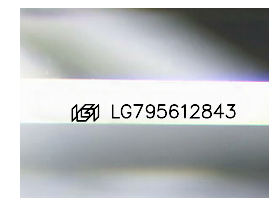
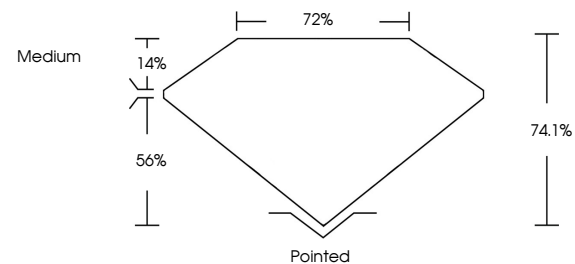
Symmetry **EXCELLENT**

Fluorescence **SLIGHT**

Inscription(s) **LG795612843**

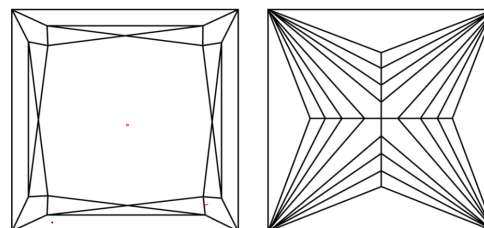
Comments: This Laboratory Grown Diamond was created by Chemical Vapor Deposition (CVD) growth process.
Indications of post-growth treatment.

PROPORTIONS



Sample Image Used

CLARITY CHARACTERISTICS



KEY TO SYMBOLS

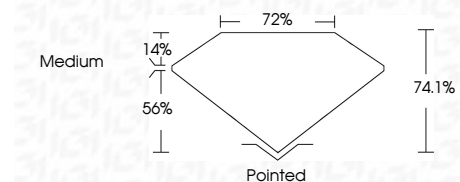
Red symbols indicate internal characteristics.
Green symbols indicate external characteristics.

COLOR

D E F G H I J Faint Very Light Light

CLARITY

FL	IF	VVS ¹⁻²	VS ¹⁻²	SI ¹⁻²	I ¹⁻³
Flawless	Internally Flawless	Very Very Slightly Included	Very Slightly Included	Slightly Included	Included



ADDITIONAL GRADING INFORMATION

Polish **EXCELLENT**

Symmetry **EXCELLENT**

Fluorescence **SLIGHT**

Inscription(s) **LG795612843**

Comments: This Laboratory Grown Diamond was created by Chemical Vapor Deposition (CVD) growth process.
Indications of post-growth treatment.



IGI



May 8, 2026
IGI Report No **LG795612843**
PRINCESS CUT
2.68 CARATS
Carat Weight **FANCY VIVID PINK**
Color Grade **VVS 2**
Depth **74.1%**
Table **72%**
Girdle **Medium**
Culet **Pointed**
Polish **EXCELLENT**
Symmetry **EXCELLENT**
Fluorescence **SLIGHT**
Inscription(s) **LG795612843**
Comments: This Laboratory Grown Diamond was created by Chemical Vapor Deposition (CVD) growth process.
Indications of post-growth treatment.