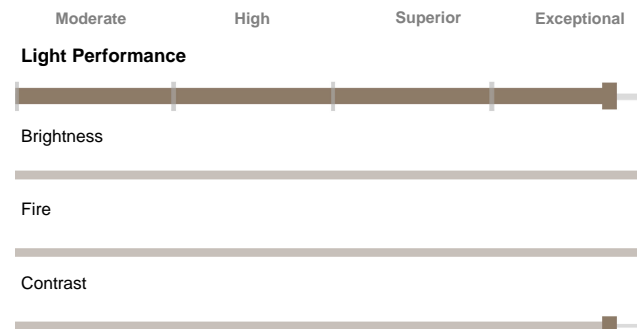




Light Performance Grade: Exceptional



Structured Light Environment Representation



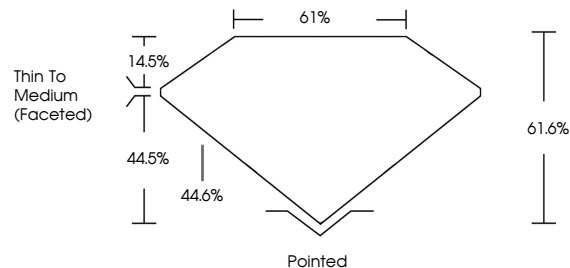
COLOR

D E F G H I J Faint Very Light Light

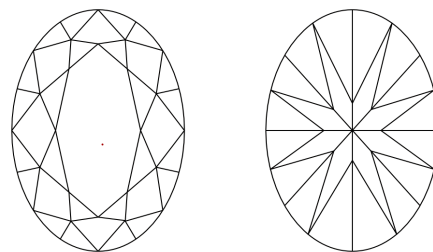
CLARITY

Table with 6 columns: FL, IF, VS 1-2, VS 1-2, SI 1-2, I 1-3. Rows: Flawless, Internally Flawless, Very Very Slightly Included, Very Slightly Included, Slightly Included, Included.

PROPORTIONS

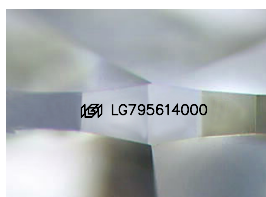


CLARITY CHARACTERISTICS



KEY TO SYMBOLS

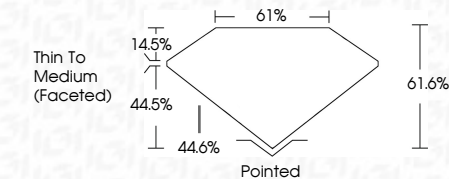
Red symbols indicate internal characteristics.
Green symbols indicate external characteristics.



Sample Image Used



April 25, 2026
IGI Report Number LG795614000
Description LABORATORY GROWN DIAMOND
Shape and Cutting Style OVAL BRILLIANT
Measurements 13.53 X 9.39 X 5.78 MM
GRADING RESULTS
Carat Weight 4.53 CARATS
Color Grade E
Clarity Grade VVS 2



ADDITIONAL GRADING INFORMATION

Polish EXCELLENT
Symmetry EXCELLENT
Fluorescence NONE
Inscription(s) IGI LG795614000
Comments: This Laboratory Grown Diamond was created by Chemical Vapor Deposition (CVD) growth process.
Type IIa



IGI

April 25, 2026
IGI Report No LG795614000
OVAL BRILLIANT
13.53 X 9.39 X 5.78 MM
Carat Weight 4.53 CARATS
Color Grade E
Clarity Grade VVS 2
Depth 61.6%
Table 61%
Girdle Thin To Medium (Faceted)
Culet Pointed
Polish EXCELLENT
Symmetry EXCELLENT
Fluorescence NONE
Inscription(s) IGI LG795614000

Comments: This Laboratory Grown Diamond was created by Chemical Vapor Deposition (CVD) growth process.
Type IIa