



Light Performance Grade: Exceptional



Structured Light Environment Representation



COLOR

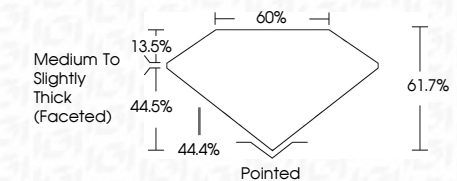
D E F G H I J Faint Very Light Light

CLARITY

Table with columns for clarity grades: FL, IF, VS 1-2, VS 1-2, SI 1-2, I 1-3 and their corresponding descriptions.



April 24, 2026 IGI Report Number LG795614004 Description LABORATORY GROWN DIAMOND Shape and Cutting Style OVAL BRILLIANT Measurements 13.59 X 9.18 X 5.66 MM GRADING RESULTS Carat Weight 4.40 CARATS Color Grade D Clarity Grade VVS 2



ADDITIONAL GRADING INFORMATION Polish EXCELLENT Symmetry EXCELLENT Fluorescence NONE Inscription(s) IGI LG795614004 Comments: This Laboratory Grown Diamond was created by Chemical Vapor Deposition (CVD) growth process. Type IIa



April 24, 2026 IGI Report No LG795614004 OVAL BRILLIANT 4.40 CARATS D VVS 2 13.59 X 9.18 X 5.66 MM Carat Weight 4.40 CARATS Color Grade D Clarity Grade VVS 2 Table 61.7% Girdle 60% Medium To Slightly Thick (Faceted) Polish EXCELLENT Symmetry EXCELLENT Fluorescence NONE Inscription(s) IGI LG795614004 Comments: This Laboratory Grown Diamond was created by Chemical Vapor Deposition (CVD) growth process. Type IIa

ELECTRONIC COPY LABORATORY GROWN DIAMOND REPORT

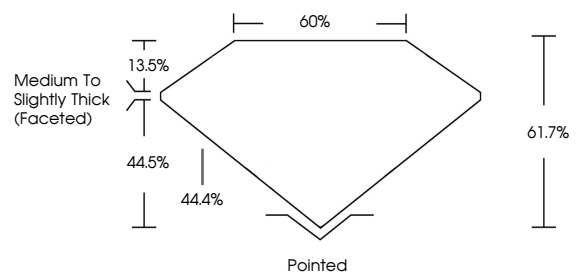
April 24, 2026 IGI Report Number LG795614004 Description LABORATORY GROWN DIAMOND Shape and Cutting Style OVAL BRILLIANT Measurements 13.59 x 9.18 x 5.66 mm

GRADING RESULTS Carat Weight 4.40 CARATS Color Grade D Clarity Grade VVS 2

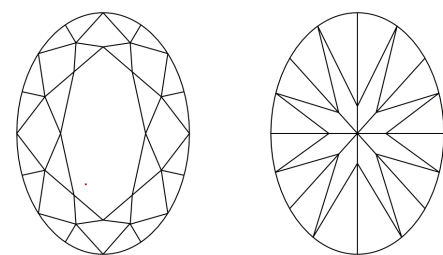
ADDITIONAL GRADING INFORMATION Polish EXCELLENT Symmetry EXCELLENT Fluorescence NONE Inscription(s) IGI LG795614004

Comments: This Laboratory Grown Diamond was created by Chemical Vapor Deposition (CVD) growth process. Type IIa

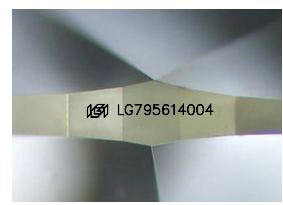
PROPORTIONS



CLARITY CHARACTERISTICS



KEY TO SYMBOLS Red symbols indicate internal characteristics. Green symbols indicate external characteristics.



Sample Image Used