



LABORATORY GROWN DIAMOND REPORT

May 14, 2026
 IGI Report Number **LG795614653**
 Description **LABORATORY GROWN DIAMOND**
 Shape and Cutting Style **HEART BRILLIANT**
 Measurements **6.20 X 6.44 X 3.65 MM**

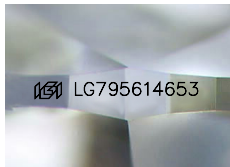
GRADING RESULTS

Carat Weight **0.84 CARAT**
 Color Grade **FANCY VIVID PINK**
 Clarity Grade **VS 2**

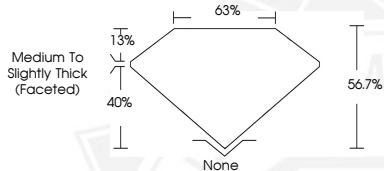
ADDITIONAL GRADING INFORMATION

Polish **EXCELLENT**
 Symmetry **EXCELLENT**
 Fluorescence **SLIGHT**
 Inscription(s) **IGI LG795614653**

Comments: This Laboratory Grown Diamond was created by Chemical Vapor Deposition (CVD) growth process. Indications of post-growth treatment.



Sample Image Used



May 14, 2026
 IGI Report Number **LG795614653**
HEART BRILLIANT
LABORATORY GROWN DIAMOND
6.20 X 6.44 X 3.65 MM
 Carat Weight **0.84 CARAT**
 Color Grade **FANCY VIVID PINK**
 Clarity Grade **VS 2**
 Polish **EXCELLENT**
 Symmetry **EXCELLENT**
 Fluorescence **SLIGHT**
 Inscription(s) **IGI LG795614653**

Comments: This Laboratory Grown Diamond was created by Chemical Vapor Deposition (CVD) growth process. Indications of post-growth treatment.



May 14, 2026
 IGI Report Number **LG795614653**
HEART BRILLIANT
LABORATORY GROWN DIAMOND
6.20 X 6.44 X 3.65 MM
 Carat Weight **0.84 CARAT**
 Color Grade **FANCY VIVID PINK**
 Clarity Grade **VS 2**
 Polish **EXCELLENT**
 Symmetry **EXCELLENT**
 Fluorescence **SLIGHT**
 Inscription(s) **IGI LG795614653**

Comments: This Laboratory Grown Diamond was created by Chemical Vapor Deposition (CVD) growth process. Indications of post-growth treatment.



THIS DOCUMENT WAS PRODUCED WITH THE FOLLOWING SECURITY MEASURES: SPECIAL DOCUMENT PAPER, INK SCREENS, WATERMARK, BACKGROUND DESIGNS, HOLOGRAM AND OTHER SECURITY FEATURES NOT LISTED AND DO EXCEED DOCUMENT SECURITY INDUSTRY GUIDELINES.