



May 14, 2026

IGI Report Number LG795614665
CUSHION MODIFIED BRILLIANT
LABORATORY GROWN DIAMOND
7.21 X 4.63 X 2.97 MM

Carat Weight 0.91 CARAT
Color Grade FANCY INTENSE
YELLOW

Clarity Grade VVS 2
Polish VERY GOOD
Symmetry VERY GOOD
Fluorescence NONE
Inscription(s) IGI LG795614665

Comments: This Laboratory Grown Diamond was created by Chemical Vapor Deposition (CVD) growth process.

LABORATORY GROWN DIAMOND REPORT

May 14, 2026
IGI Report Number **LG795614665**
Description **LABORATORY GROWN DIAMOND**
Shape and Cutting Style **CUSHION MODIFIED BRILLIANT**
Measurements **7.21 X 4.63 X 2.97 MM**

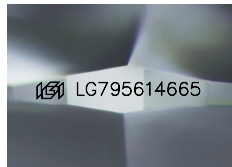
GRADING RESULTS

Carat Weight 0.91 CARAT
Color Grade FANCY INTENSE YELLOW
Clarity Grade VVS 2

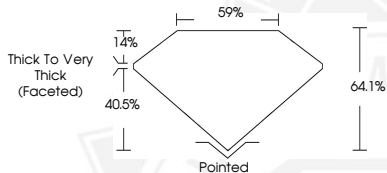
ADDITIONAL GRADING INFORMATION

Polish VERY GOOD
Symmetry VERY GOOD
Fluorescence NONE
Inscription(s) IGI LG795614665

Comments: This Laboratory Grown Diamond was created by Chemical Vapor Deposition (CVD) growth process.



Sample Image Used



May 14, 2026

IGI Report Number LG795614665
CUSHION MODIFIED BRILLIANT
LABORATORY GROWN DIAMOND
7.21 X 4.63 X 2.97 MM

Carat Weight 0.91 CARAT
Color Grade FANCY INTENSE
YELLOW

Clarity Grade VVS 2
Polish VERY GOOD
Symmetry VERY GOOD
Fluorescence NONE
Inscription(s) IGI LG795614665

Comments: This Laboratory Grown Diamond was created by Chemical Vapor Deposition (CVD) growth process.



THIS DOCUMENT WAS PRODUCED WITH THE FOLLOWING SECURITY MEASURES: SPECIAL DOCUMENT PAPER, INK SCREENS, WATERMARK, BACKGROUND DESIGNS, HOLOGRAM AND OTHER SECURITY FEATURES NOT LISTED AND DO EXCEED DOCUMENT SECURITY INDUSTRY GUIDELINES.