



May 18, 2026

IGI Report Number **LG795614802**

**OVAL BRILLIANT  
LABORATORY GROWN DIAMOND  
6.09 X 4.28 X 2.53 MM**

Carat Weight	<b>0.42 CARAT</b>
Color Grade	<b>FANCY VIVID PINK</b>
Clarity Grade	<b>VS 1</b>
Polish	<b>VERY GOOD</b>
Symmetry	<b>VERY GOOD</b>
Fluorescence	<b>SLIGHT</b>
Inscription(s)	<b>IGI LG795614802</b>

Comments: This Laboratory Grown Diamond was created by High Pressure High Temperature (HPHT) growth process. Indications of post-growth treatment.

**LABORATORY GROWN DIAMOND REPORT**

May 18, 2026  
IGI Report Number **LG795614802**  
Description **LABORATORY GROWN DIAMOND**  
Shape and Cutting Style **OVAL BRILLIANT**  
Measurements **6.09 X 4.28 X 2.53 MM**

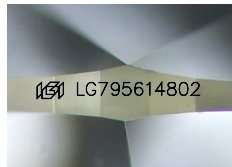
**GRADING RESULTS**

Carat Weight **0.42 CARAT**  
Color Grade **FANCY VIVID PINK**  
Clarity Grade **VS 1**

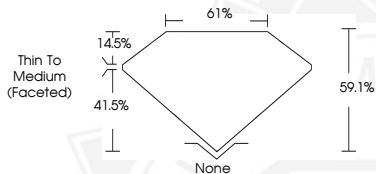
**ADDITIONAL GRADING INFORMATION**

Polish **VERY GOOD**  
Symmetry **VERY GOOD**  
Fluorescence **SLIGHT**  
Inscription(s) **IGI LG795614802**

Comments: This Laboratory Grown Diamond was created by High Pressure High Temperature (HPHT) growth process. Indications of post-growth treatment.



Sample Image Used



May 18, 2026

IGI Report Number **LG795614802**

**OVAL BRILLIANT  
LABORATORY GROWN DIAMOND  
6.09 X 4.28 X 2.53 MM**

Carat Weight	<b>0.42 CARAT</b>
Color Grade	<b>FANCY VIVID PINK</b>
Clarity Grade	<b>VS 1</b>
Polish	<b>VERY GOOD</b>
Symmetry	<b>VERY GOOD</b>
Fluorescence	<b>SLIGHT</b>
Inscription(s)	<b>IGI LG795614802</b>

Comments: This Laboratory Grown Diamond was created by High Pressure High Temperature (HPHT) growth process. Indications of post-growth treatment.



THIS DOCUMENT WAS PRODUCED WITH THE FOLLOWING SECURITY MEASURES: SPECIAL DOCUMENT PAPER, INK SCREENS, WATERMARK, BACKGROUND DESIGNS, HOLOGRAM AND OTHER SECURITY FEATURES NOT LISTED AND DO EXCEED DOCUMENT SECURITY INDUSTRY GUIDELINES.