



ELECTRONIC COPY

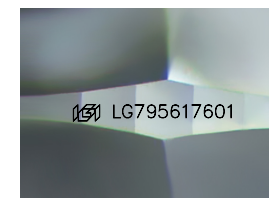
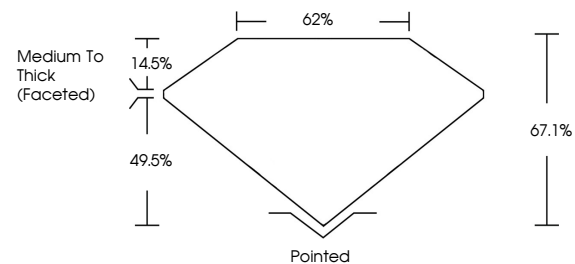
LG795617601
Report verification at igi.org



April 28, 2026
IGI Report Number **LG795617601**
Description **LABORATORY GROWN DIAMOND**
Shape and Cutting Style **CUSHION MODIFIED BRILLIANT**
Measurements **8.16 X 6.36 X 4.27 MM**
GRADING RESULTS
Carat Weight **1.77 CARAT**
Color Grade **E**
Clarity Grade **VS 1**

April 28, 2026
IGI Report Number **LG795617601**
Description **LABORATORY GROWN DIAMOND**
Shape and Cutting Style **CUSHION MODIFIED BRILLIANT**
Measurements **8.16 X 6.36 X 4.27 MM**

PROPORTIONS

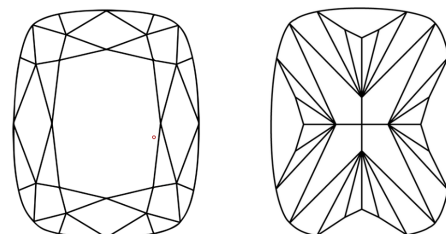


Sample Image Used

GRADING RESULTS

Carat Weight **1.77 CARAT**
Color Grade **E**
Clarity Grade **VS 1**

CLARITY CHARACTERISTICS



KEY TO SYMBOLS

Red symbols indicate internal characteristics.
Green symbols indicate external characteristics.

ADDITIONAL GRADING INFORMATION

Polish **EXCELLENT**
Symmetry **EXCELLENT**
Fluorescence **NONE**
Inscription(s) **IGI LG795617601**

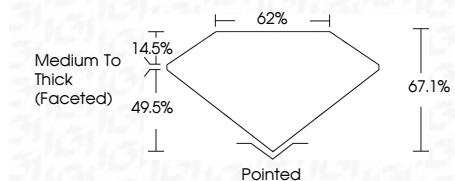
Comments: This Laboratory Grown Diamond was created by Chemical Vapor Deposition (CVD) growth process.
Type IIa

COLOR

D E F G H I J Faint Very Light Light

CLARITY

FL	IF	VS ¹⁻²	VS ¹⁻²	SI ¹⁻²	I ¹⁻³
Flawless	Internally Flawless	Very Very Slightly Included	Very Slightly Included	Slightly Included	Included



ADDITIONAL GRADING INFORMATION

Polish **EXCELLENT**
Symmetry **EXCELLENT**
Fluorescence **NONE**
Inscription(s) **IGI LG795617601**
Comments: This Laboratory Grown Diamond was created by Chemical Vapor Deposition (CVD) growth process.
Type IIa



April 28, 2026
IGI Report No **LG795617601**
CUSHION MODIFIED BRILLIANT
8.16 X 6.36 X 4.27 MM
Carat Weight **1.77 CARAT**
Color Grade **E**
Clarity Grade **VS 1**
Depth **67.1%**
Table **62%**
Girdle **Medium To Thick (Faceted)**
Culet **Pointed**
Polish **EXCELLENT**
Symmetry **EXCELLENT**
Fluorescence **NONE**
Inscription(s) **IGI LG795617601**
Comments: This Laboratory Grown Diamond was created by Chemical Vapor Deposition (CVD) growth process.
Type IIa