



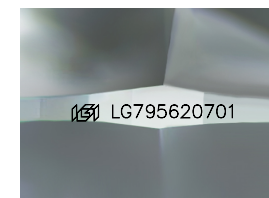
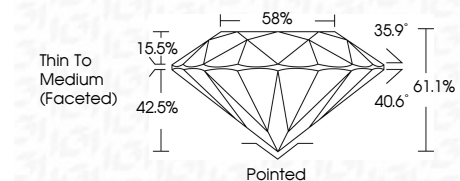
ELECTRONIC COPY

LG795620701 Report verification at igi.org



April 27, 2026 IGI Report Number LG795620701 Description LABORATORY GROWN DIAMOND Shape and Cutting Style ROUND BRILLIANT Measurements 7.48 - 7.51 X 4.57 MM

GRADING RESULTS Carat Weight 1.58 CARAT Color Grade F Clarity Grade VVS 2 Cut Grade IDEAL



Sample Image Used

ADDITIONAL GRADING INFORMATION Polish EXCELLENT Symmetry EXCELLENT Fluorescence NONE Inscription(s) IGI LG795620701 Comments: This Laboratory Grown Diamond was created by Chemical Vapor Deposition (CVD) growth process. Type IIa



April 27, 2026 IGI Report No LG795620701 ROUND BRILLIANT 7.48 - 7.51 X 4.57 MM 1.58 CARAT F VVS 2 IDEAL 61.1% 58% Thin To Medium (Faceted) Pointed EXCELLENT EXCELLENT NONE NONE IGI LG795620701 Comments: This Laboratory Grown Diamond was created by Chemical Vapor Deposition (CVD) growth process. Type IIa

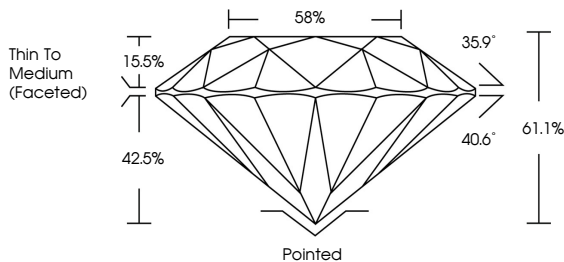
April 27, 2026 IGI Report Number LG795620701 Description LABORATORY GROWN DIAMOND Shape and Cutting Style ROUND BRILLIANT Measurements 7.48 - 7.51 X 4.57 MM

GRADING RESULTS Carat Weight 1.58 CARAT Color Grade F Clarity Grade VVS 2 Cut Grade IDEAL

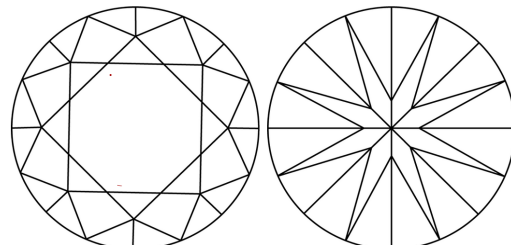
ADDITIONAL GRADING INFORMATION Polish EXCELLENT Symmetry EXCELLENT Fluorescence NONE Inscription(s) IGI LG795620701

Comments: This Laboratory Grown Diamond was created by Chemical Vapor Deposition (CVD) growth process. Type IIa

PROPORTIONS



CLARITY CHARACTERISTICS



KEY TO SYMBOLS Red symbols indicate internal characteristics. Green symbols indicate external characteristics.

Color scale table with categories D, E, F, G, H, I, J, Faint, Very Light, Light

Clarity scale table with categories FL, IF, VVS 1-2, VS 1-2, SI 1-2, I 1-3

