



ELECTRONIC COPY

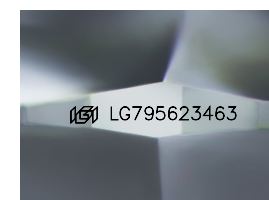
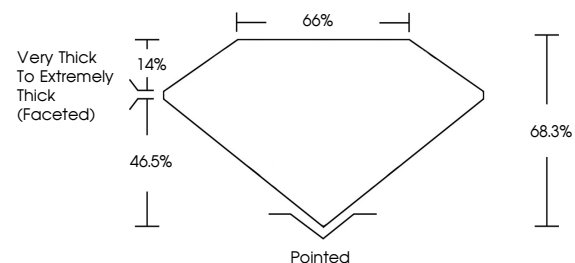
LG795623463
Report verification at igi.org



May 20, 2026
IGI Report Number **LG795623463**
Description **LABORATORY GROWN DIAMOND**
Shape and Cutting Style **SQUARE CUSHION MODIFIED BRILLIANT**
Measurements **6.87 X 6.81 X 4.65 MM**
GRADING RESULTS
Carat Weight **2.16 CARATS**
Color Grade **FANCY VIVID YELLOW**
Clarity Grade **VVS 2**

May 20, 2026
IGI Report Number **LG795623463**
Description **LABORATORY GROWN DIAMOND**
Shape and Cutting Style **SQUARE CUSHION MODIFIED BRILLIANT**
Measurements **6.87 X 6.81 X 4.65 MM**

PROPORTIONS

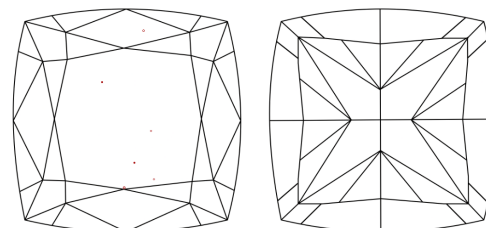


Sample Image Used

GRADING RESULTS

Carat Weight **2.16 CARATS**
Color Grade **FANCY VIVID YELLOW**
Clarity Grade **VVS 2**

CLARITY CHARACTERISTICS



KEY TO SYMBOLS

Red symbols indicate internal characteristics.
Green symbols indicate external characteristics.

ADDITIONAL GRADING INFORMATION

Polish **EXCELLENT**
Symmetry **EXCELLENT**
Fluorescence **NONE**
Inscription(s) **IGI LG795623463**

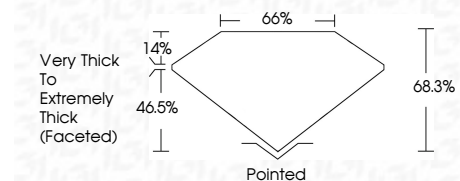
Comments: This Laboratory Grown Diamond was created by Chemical Vapor Deposition (CVD) growth process.

COLOR

D E F G H I J Faint Very Light Light

CLARITY

FL	IF	VVS ¹⁻²	VS ¹⁻²	SI ¹⁻²	I ¹⁻³
Flawless	Internally Flawless	Very Very Slightly Included	Very Slightly Included	Slightly Included	Included



ADDITIONAL GRADING INFORMATION

Polish **EXCELLENT**
Symmetry **EXCELLENT**
Fluorescence **NONE**
Inscription(s) **IGI LG795623463**
Comments: This Laboratory Grown Diamond was created by Chemical Vapor Deposition (CVD) growth process.



IGI



May 20, 2026
IGI Report No. LG795623463
SQUARE CUSHION MODIFIED BRILLIANT
6.87 X 6.81 X 4.65 MM
2.16 CARATS
FANCY VIVID YELLOW
VVS 2
68.3%
65%
Very Thick to Extremely Thick (Faceted)
Pointed
EXCELLENT
EXCELLENT
NONE
IGI LG795623463

Comments: This Laboratory Grown Diamond was created by Chemical Vapor Deposition (CVD) growth process.