



ELECTRONIC COPY

LG795623752
Report verification at igi.org



May 25, 2026
IGI Report Number **LG795623752**
Description **LABORATORY GROWN DIAMOND**
Shape and Cutting Style **CUT CORNERED
RECTANGULAR MODIFIED
BRILLIANT**
Measurements **8.63 X 5.56 X 3.90 MM**
GRADING RESULTS
Carat Weight **1.60 CARAT**
Color Grade **FANCY VIVID BLUE**
Clarity Grade **VS 2**

LABORATORY GROWN DIAMOND REPORT

May 25, 2026
IGI Report Number **LG795623752**
Description **LABORATORY GROWN DIAMOND**
Shape and Cutting Style **CUT CORNERED RECTANGULAR
MODIFIED BRILLIANT**
Measurements **8.63 X 5.56 X 3.90 MM**

GRADING RESULTS

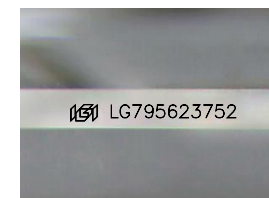
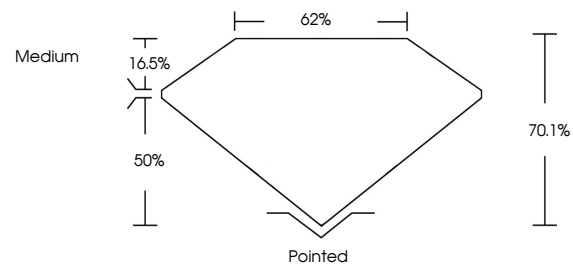
Carat Weight **1.60 CARAT**
Color Grade **FANCY VIVID BLUE**
Clarity Grade **VS 2**

ADDITIONAL GRADING INFORMATION

Polish **EXCELLENT**
Symmetry **EXCELLENT**
Fluorescence **NONE**
Inscription(s) **IGI LG795623752**

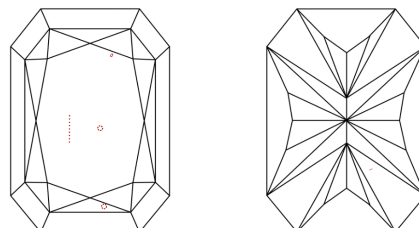
Comments: This Laboratory Grown Diamond was created by Chemical Vapor Deposition (CVD) growth process.
Indications of post-growth treatment.

PROPORTIONS



Sample Image Used

CLARITY CHARACTERISTICS



KEY TO SYMBOLS

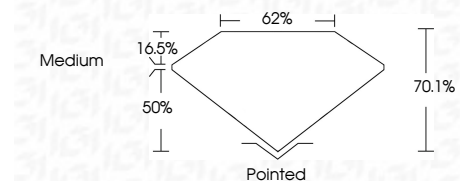
Red symbols indicate internal characteristics.
Green symbols indicate external characteristics.

COLOR

D E F G H I J Faint Very Light Light

CLARITY

FL	IF	VS ¹⁻²	VS ¹⁻²	SI ¹⁻²	I ¹⁻³
Flawless	Internally Flawless	Very Very Slightly Included	Very Slightly Included	Slightly Included	Included



ADDITIONAL GRADING INFORMATION

Polish **EXCELLENT**
Symmetry **EXCELLENT**
Fluorescence **NONE**
Inscription(s) **IGI LG795623752**
Comments: This Laboratory Grown Diamond was created by Chemical Vapor Deposition (CVD) growth process.
Indications of post-growth treatment.



May 25, 2026
IGI Report No LG795623752
CUT CORNERED RECT. MODIFIED BRILLIANT
8.63 X 5.56 X 3.90 MM
1.60 CARAT
FANCY VIVID BLUE
VS 2
70.1%
62%
Medium
Pointed
EXCELLENT
EXCELLENT
NONE
IGI LG795623752
Comments: This Laboratory Grown Diamond was created by Chemical Vapor Deposition (CVD) growth process.
Indications of post-growth treatment.