



LABORATORY GROWN DIAMOND REPORT

May 19, 2026
 IGI Report Number **LG795625073**
 Description **LABORATORY GROWN DIAMOND**
 Shape and Cutting Style **HEART MODIFIED BRILLIANT**
 Measurements **4.39 X 5.19 X 3.05 MM**

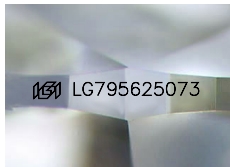
GRADING RESULTS

Carat Weight **0.54 CARAT**
 Color Grade **FANCY INTENSE YELLOW**
 Clarity Grade **VVS 2**

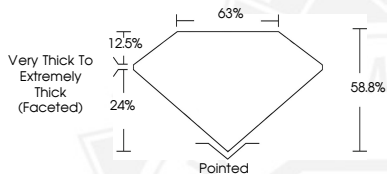
ADDITIONAL GRADING INFORMATION

Polish **VERY GOOD**
 Symmetry **VERY GOOD**
 Fluorescence **NONE**
 Inscription(s) **IGI LG795625073**

Comments: This Laboratory Grown Diamond was created by Chemical Vapor Deposition (CVD) growth process.



Sample Image Used



May 19, 2026

IGI Report Number **LG795625073**
HEART MODIFIED BRILLIANT
LABORATORY GROWN DIAMOND
4.39 X 5.19 X 3.05 MM

Carat Weight **0.54 CARAT**
 Color Grade **FANCY INTENSE YELLOW**

Clarity Grade **VVS 2**
 Polish **VERY GOOD**
 Symmetry **VERY GOOD**
 Fluorescence **NONE**
 Inscription(s) **IGI LG795625073**

Comments: This Laboratory Grown Diamond was created by Chemical Vapor Deposition (CVD) growth process.



May 19, 2026

IGI Report Number **LG795625073**
HEART MODIFIED BRILLIANT
LABORATORY GROWN DIAMOND
4.39 X 5.19 X 3.05 MM

Carat Weight **0.54 CARAT**
 Color Grade **FANCY INTENSE YELLOW**

Clarity Grade **VVS 2**
 Polish **VERY GOOD**
 Symmetry **VERY GOOD**
 Fluorescence **NONE**
 Inscription(s) **IGI LG795625073**

Comments: This Laboratory Grown Diamond was created by Chemical Vapor Deposition (CVD) growth process.



THIS DOCUMENT WAS PRODUCED WITH THE FOLLOWING SECURITY MEASURES: SPECIAL DOCUMENT PAPER, INK SCREENS, WATERMARK, BACKGROUND DESIGNS, HOLOGRAM AND OTHER SECURITY FEATURES NOT LISTED AND DO EXCEED DOCUMENT SECURITY INDUSTRY GUIDELINES.