



**ELECTRONIC COPY**

LG795634150  
Report verification at igi.org



May 19, 2026  
IGI Report Number **LG795634150**  
Description **LABORATORY GROWN DIAMOND**  
Shape and Cutting Style **CUSHION MODIFIED BRILLIANT**  
Measurements **10.33 X 7.67 X 5.06 MM**  
**GRADING RESULTS**  
Carat Weight **3.04 CARATS**  
Color Grade **D**  
Clarity Grade **VVS 2**

May 19, 2026  
IGI Report Number **LG795634150**  
Description **LABORATORY GROWN DIAMOND**  
Shape and Cutting Style **CUSHION MODIFIED BRILLIANT**  
Measurements **10.33 X 7.67 X 5.06 MM**

**GRADING RESULTS**

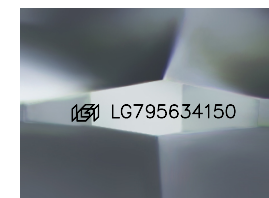
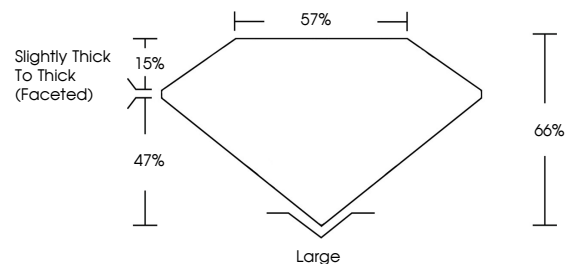
Carat Weight **3.04 CARATS**  
Color Grade **D**  
Clarity Grade **VVS 2**

**ADDITIONAL GRADING INFORMATION**

Polish **EXCELLENT**  
Symmetry **EXCELLENT**  
Fluorescence **NONE**  
Inscription(s) **IGI LG795634150**

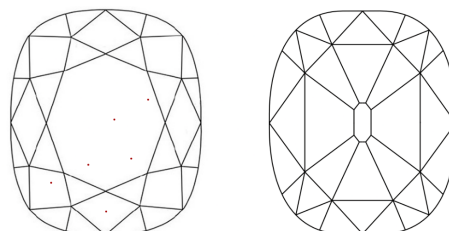
Comments: This Laboratory Grown Diamond was created by Chemical Vapor Deposition (CVD) growth process.  
Type IIa

**PROPORTIONS**



Sample Image Used

**CLARITY CHARACTERISTICS**



**KEY TO SYMBOLS**

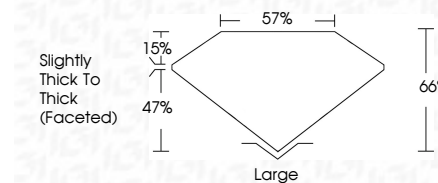
Red symbols indicate internal characteristics.  
Green symbols indicate external characteristics.

**COLOR**

D E F G H I J Faint Very Light Light

**CLARITY**

FL	IF	VVS <sup>1-2</sup>	VS <sup>1-2</sup>	SI <sup>1-2</sup>	I <sup>1-3</sup>
Flawless	Internally Flawless	Very Very Slightly Included	Very Slightly Included	Slightly Included	Included



**ADDITIONAL GRADING INFORMATION**

Polish **EXCELLENT**  
Symmetry **EXCELLENT**  
Fluorescence **NONE**  
Inscription(s) **IGI LG795634150**  
Comments: This Laboratory Grown Diamond was created by Chemical Vapor Deposition (CVD) growth process.  
Type IIa



May 19, 2026  
IGI Report No LG795634150  
CUSHION MODIFIED BRILLIANT  
10.33 X 7.67 X 5.06 MM  
3.04 CARATS  
D  
VVS 2  
66%  
57%  
Slightly Thick To Thick (Faceted)  
Large  
EXCELLENT  
EXCELLENT  
NONE  
IGI LG795634150

Comments: This Laboratory Grown Diamond was created by Chemical Vapor Deposition (CVD) growth process.  
Type IIa