



**ELECTRONIC COPY**

LG795636166  
Report verification at igi.org



April 28, 2026

IGI Report Number **LG795636166**

Description **LABORATORY GROWN DIAMOND**

Shape and Cutting Style **ROUND BRILLIANT**

Measurements **10.26 - 10.29 X 6.27 MM**

**GRADING RESULTS**

Carat Weight **4.04 CARATS**

Color Grade **E**

Clarity Grade **VVS 2**

Cut Grade **IDEAL**

April 28, 2026

IGI Report Number **LG795636166**

Description **LABORATORY GROWN DIAMOND**

Shape and Cutting Style **ROUND BRILLIANT**

Measurements **10.26 - 10.29 X 6.27 MM**

**GRADING RESULTS**

Carat Weight **4.04 CARATS**

Color Grade **E**

Clarity Grade **VVS 2**

Cut Grade **IDEAL**

**ADDITIONAL GRADING INFORMATION**

Polish **EXCELLENT**

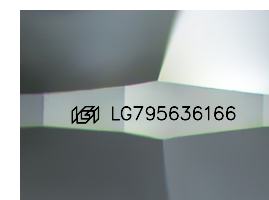
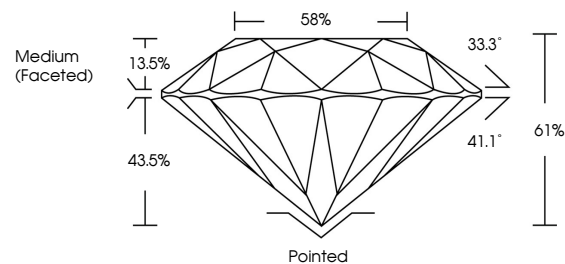
Symmetry **EXCELLENT**

Fluorescence **NONE**

Inscription(s) **IGI LG795636166**

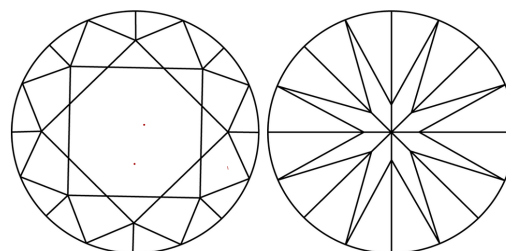
Comments: This Laboratory Grown Diamond was created by Chemical Vapor Deposition (CVD) growth process.  
Type IIa

**PROPORTIONS**



Sample Image Used

**CLARITY CHARACTERISTICS**



**KEY TO SYMBOLS**

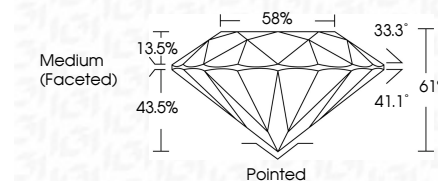
Red symbols indicate internal characteristics.  
Green symbols indicate external characteristics.

**COLOR**

D E F G H I J Faint Very Light Light

**CLARITY**

| FL       | IF                  | VVS <sup>1-2</sup>          | VS <sup>1-2</sup>      | SI <sup>1-2</sup> | I <sup>1-3</sup> |
|----------|---------------------|-----------------------------|------------------------|-------------------|------------------|
| Flawless | Internally Flawless | Very Very Slightly Included | Very Slightly Included | Slightly Included | Included         |



**ADDITIONAL GRADING INFORMATION**

Polish **EXCELLENT**

Symmetry **EXCELLENT**

Fluorescence **NONE**

Inscription(s) **IGI LG795636166**

Comments: This Laboratory Grown Diamond was created by Chemical Vapor Deposition (CVD) growth process.  
Type IIa



**IGI**



|                        |                                |                    |             |                |                  |                  |                  |  |
|------------------------|--------------------------------|--------------------|-------------|----------------|------------------|------------------|------------------|--|
| April 28, 2026         | IGI Report No LG795636166      | <b>4.04 CARATS</b> | <b>E</b>    | <b>Pointed</b> | <b>EXCELLENT</b> | <b>EXCELLENT</b> | <b>NONE</b>      | <b>IGI LG795636166</b>   |
| <b>ROUND BRILLIANT</b> | <b>10.26 - 10.29 X 6.27 MM</b> | Carat Weight       | Color Grade | Clarity Grade  | Depth            | Table            | Girdle           | Culet  |
|                        |                                |                    |             |                | 61%              | 58%              | Medium (Faceted) |  |
|                        |                                |                    |             |                |                  |                  |                  | Polish   |
|                        |                                |                    |             |                |                  |                  |                  | Symmetry   |
|                        |                                |                    |             |                |                  |                  |                  | Fluorescence   |
|                        |                                |                    |             |                |                  |                  |                  | Inscription(s)   |
|                        |                                |                    |             |                |                  |                  |                  | Comments: This Laboratory Grown Diamond was created by Chemical Vapor Deposition (CVD) growth process.<br>Type IIa |