



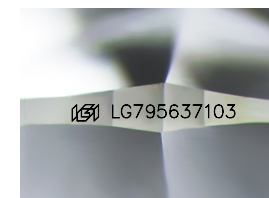
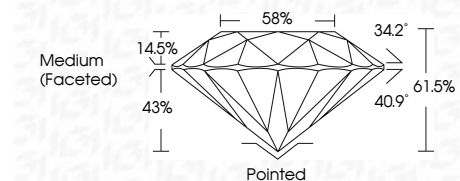
ELECTRONIC COPY

LG795637103
Report verification at igi.org



May 4, 2026
IGI Report Number LG795637103
Description LABORATORY GROWN DIAMOND
Shape and Cutting Style ROUND BRILLIANT
Measurements 12.26 - 12.34 X 7.56 MM

GRADING RESULTS
Carat Weight 7.07 CARATS
Color Grade E
Clarity Grade VS 1
Cut Grade IDEAL



Sample Image Used

ADDITIONAL GRADING INFORMATION
Polish EXCELLENT
Symmetry EXCELLENT
Fluorescence NONE
Inscription(s) IGI LG795637103
Comments: This Laboratory Grown Diamond was created by Chemical Vapor Deposition (CVD) growth process. Type IIa



May 4, 2026
IGI Report No LG795637103
ROUND BRILLIANT
12.26 - 12.34 X 7.56 MM
7.07 CARATS
E
VS 1
IDEAL
61.5%
58%
Medium (Faceted)
Pointed
EXCELLENT
EXCELLENT
NONE
IGI LG795637103
Comments: This Laboratory Grown Diamond was created by Chemical Vapor Deposition (CVD) growth process. Type IIa

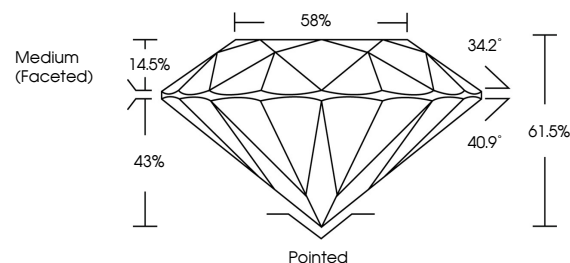
May 4, 2026
IGI Report Number LG795637103
Description LABORATORY GROWN DIAMOND
Shape and Cutting Style ROUND BRILLIANT
Measurements 12.26 - 12.34 X 7.56 MM

GRADING RESULTS
Carat Weight 7.07 CARATS
Color Grade E
Clarity Grade VS 1
Cut Grade IDEAL

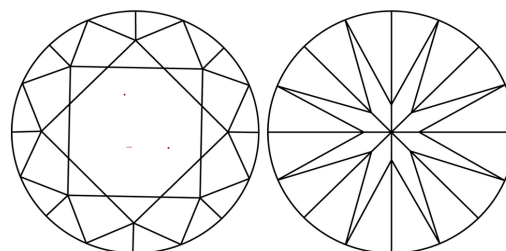
ADDITIONAL GRADING INFORMATION
Polish EXCELLENT
Symmetry EXCELLENT
Fluorescence NONE
Inscription(s) IGI LG795637103

Comments: This Laboratory Grown Diamond was created by Chemical Vapor Deposition (CVD) growth process. Type IIa

PROPORTIONS



CLARITY CHARACTERISTICS



KEY TO SYMBOLS

Red symbols indicate internal characteristics.
Green symbols indicate external characteristics.

COLOR

D E F G H I J Faint Very Light Light

CLARITY

FL IF VS 1-2 VS 2-3 SI 1-2 I 1-3
Flawless Internally Flawless Very Very Slightly Included Very Slightly Included Slightly Included Included

