



ELECTRONIC COPY

LG795642665 Report verification at igi.org



May 11, 2026 IGI Report Number LG795642665 Description LABORATORY GROWN DIAMOND Shape and Cutting Style SQUARE CUSHION MODIFIED BRILLIANT Measurements 7.07 X 7.06 X 4.58 MM GRADING RESULTS Carat Weight 2.04 CARATS Color Grade FANCY INTENSE YELLOW Clarity Grade VS 1

May 11, 2026 IGI Report Number LG795642665 Description LABORATORY GROWN DIAMOND Shape and Cutting Style SQUARE CUSHION MODIFIED BRILLIANT Measurements 7.07 X 7.06 X 4.58 MM

GRADING RESULTS

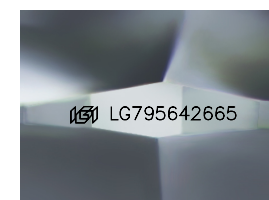
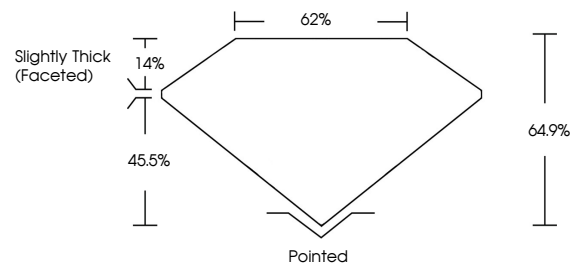
Carat Weight 2.04 CARATS Color Grade FANCY INTENSE YELLOW Clarity Grade VS 1

ADDITIONAL GRADING INFORMATION

Polish EXCELLENT Symmetry EXCELLENT Fluorescence VERY SLIGHT Inscription(s) IGI LG795642665

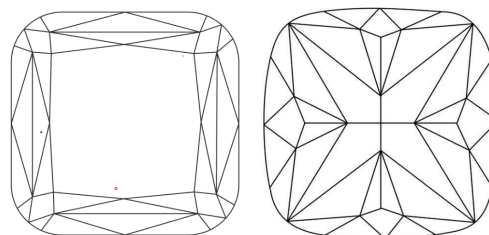
Comments: This Laboratory Grown Diamond was created by Chemical Vapor Deposition (CVD) growth process.

PROPORTIONS



Sample Image Used

CLARITY CHARACTERISTICS



KEY TO SYMBOLS

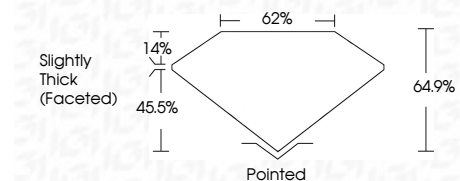
Red symbols indicate internal characteristics. Green symbols indicate external characteristics.

COLOR

D E F G H I J Faint Very Light Light

CLARITY

FL IF VS 1-2 VS 2-3 SI 1-2 I 1-3 Flawless Internally Flawless Very Very Slightly Included Very Slightly Included Slightly Included Included



ADDITIONAL GRADING INFORMATION

Polish EXCELLENT Symmetry EXCELLENT Fluorescence VERY SLIGHT Inscription(s) IGI LG795642665 Comments: This Laboratory Grown Diamond was created by Chemical Vapor Deposition (CVD) growth process.



May 11, 2026 IGI Report No LG795642665 SQUARE CUSHION MODIFIED BRILLIANT 7.07 X 7.06 X 4.58 MM 2.04 CARATS FANCY INTENSE YELLOW VS 1 64.9% 62% Slightly Thick (Faceted) Pointed EXCELLENT EXCELLENT VERY SLIGHT IGI LG795642665 Comments: This Laboratory Grown Diamond was created by Chemical Vapor Deposition (CVD) growth process.