



ELECTRONIC COPY

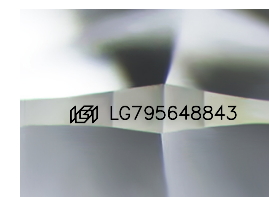
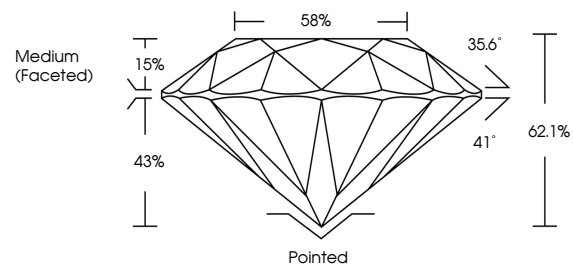
LG795648843
Report verification at igi.org



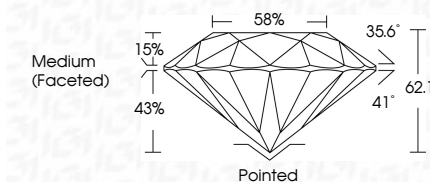
May 5, 2026
IGI Report Number **LG795648843**
Description **LABORATORY GROWN DIAMOND**
Shape and Cutting Style **ROUND BRILLIANT**
Measurements **6.49 - 6.54 X 4.04 MM**
GRADING RESULTS
Carat Weight **1.07 CARAT**
Color Grade **E**
Clarity Grade **VS 1**
Cut Grade **IDEAL**

May 5, 2026
IGI Report Number **LG795648843**
Description **LABORATORY GROWN DIAMOND**
Shape and Cutting Style **ROUND BRILLIANT**
Measurements **6.49 - 6.54 X 4.04 MM**
GRADING RESULTS
Carat Weight **1.07 CARAT**
Color Grade **E**
Clarity Grade **VS 1**
Cut Grade **IDEAL**

PROPORTIONS



Sample Image Used



ADDITIONAL GRADING INFORMATION
Polish **EXCELLENT**
Symmetry **EXCELLENT**
Fluorescence **NONE**
Inscription(s) **IGI LG795648843**

Comments: This Laboratory Grown Diamond was created by Chemical Vapor Deposition (CVD) growth process. Type IIa

COLOR

D E F G H I J Faint Very Light Light

CLARITY

FL	IF	VS ¹⁻²	VS ¹⁻²	SI ¹⁻²	I ¹⁻³
Flawless	Internally Flawless	Very Very Slightly Included	Very Slightly Included	Slightly Included	Included

ADDITIONAL GRADING INFORMATION

Polish **EXCELLENT**
Symmetry **EXCELLENT**
Fluorescence **NONE**
Inscription(s) **IGI LG795648843**
Comments: This Laboratory Grown Diamond was created by Chemical Vapor Deposition (CVD) growth process. Type IIa



May 5, 2026
IGI Report No **LG795648843**
ROUND BRILLIANT
6.49 - 6.54 X 4.04 MM
1.07 CARAT
E
VS 1
IDEAL
62.1%
58%
Medium (Faceted)
Pointed
EXCELLENT
EXCELLENT
NONE
IGI LG795648843
Comments: This Laboratory Grown Diamond was created by Chemical Vapor Deposition (CVD) growth process. Type IIa