



ELECTRONIC COPY

LG795651965
Report verification at igi.org



May 4, 2026

IGI Report Number **LG795651965**

Description **LABORATORY GROWN DIAMOND**

Shape and Cutting Style **CUT CORNERED
RECTANGULAR MODIFIED
BRILLIANT**

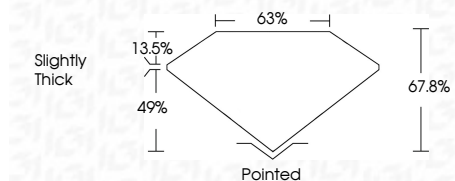
Measurements **11.58 X 8.16 X 5.53 MM**

GRADING RESULTS

Carat Weight **4.55 CARATS**

Color Grade **E**

Clarity Grade **VVS 2**



ADDITIONAL GRADING INFORMATION

Polish **EXCELLENT**

Symmetry **EXCELLENT**

Fluorescence **NONE**

Inscription(s) **IGI LG795651965**

Comments: This Laboratory Grown Diamond was created by Chemical Vapor Deposition (CVD) growth process. Type IIa



May 4, 2026	IGI Report No LG795651965	CUT CORNERED RECT. MODIFIED BRILLIANT	11.58 X 8.16 X 5.53 MM	4.55 CARATS	E	VVS 2	67.8%	63%	Slightly Thick	Pointed	EXCELLENT	EXCELLENT	NONE	IGI LG795651965
Polish	Symmetry	Fluorescence	Inscription(s)	Carat Weight	Color Grade	Clarity Grade	Depth	Table	Graile	Culet	Polish	Symmetry	Fluorescence	Inscription(s)

Comments: This Laboratory Grown Diamond was created by Chemical Vapor Deposition (CVD) growth process. Type IIa

LABORATORY GROWN DIAMOND REPORT

May 4, 2026

IGI Report Number **LG795651965**

Description **LABORATORY GROWN DIAMOND**

Shape and Cutting Style **CUT CORNERED RECTANGULAR
MODIFIED BRILLIANT**

Measurements **11.58 X 8.16 X 5.53 MM**

GRADING RESULTS

Carat Weight **4.55 CARATS**

Color Grade **E**

Clarity Grade **VVS 2**

ADDITIONAL GRADING INFORMATION

Polish **EXCELLENT**

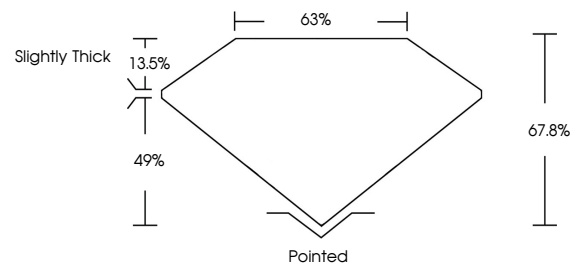
Symmetry **EXCELLENT**

Fluorescence **NONE**

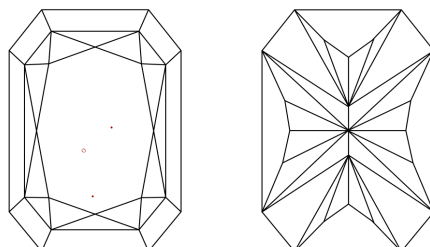
Inscription(s) **IGI LG795651965**

Comments: This Laboratory Grown Diamond was created by Chemical Vapor Deposition (CVD) growth process. Type IIa

PROPORTIONS

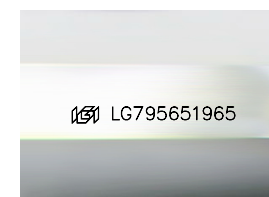


CLARITY CHARACTERISTICS



KEY TO SYMBOLS

Red symbols indicate internal characteristics.
Green symbols indicate external characteristics.



Sample Image Used

COLOR

D E F G H I J Faint Very Light Light

CLARITY

FL	IF	VVS ¹⁻²	VS ¹⁻²	SI ¹⁻²	I ¹⁻³
Flawless	Internally Flawless	Very Very Slightly Included	Very Slightly Included	Slightly Included	Included

