



**ELECTRONIC COPY**

LG795652822  
Report verification at igi.org



April 25, 2026

IGI Report Number **LG795652822**

Description **LABORATORY GROWN DIAMOND**

Shape and Cutting Style **ROUND BRILLIANT**

Measurements **7.34 - 7.37 X 4.64 MM**

**GRADING RESULTS**

Carat Weight **1.57 CARAT**

Color Grade **E**

Clarity Grade **VS 2**

Cut Grade **EXCELLENT**

April 25, 2026

IGI Report Number **LG795652822**

Description **LABORATORY GROWN DIAMOND**

Shape and Cutting Style **ROUND BRILLIANT**

Measurements **7.34 - 7.37 X 4.64 MM**

**GRADING RESULTS**

Carat Weight **1.57 CARAT**

Color Grade **E**

Clarity Grade **VS 2**

Cut Grade **EXCELLENT**

**ADDITIONAL GRADING INFORMATION**

Polish **EXCELLENT**

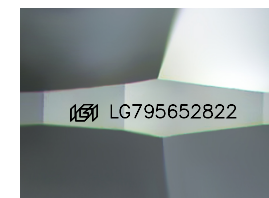
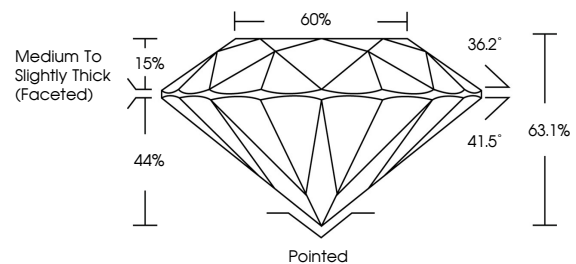
Symmetry **EXCELLENT**

Fluorescence **NONE**

Inscription(s) **IGI LG795652822**

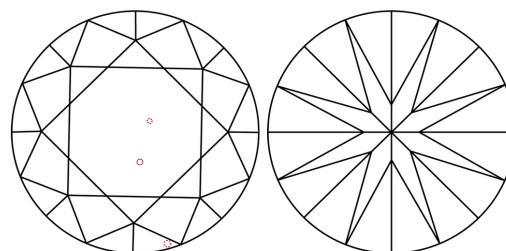
Comments: This Laboratory Grown Diamond was created by Chemical Vapor Deposition (CVD) growth process. Type IIa

**PROPORTIONS**



Sample Image Used

**CLARITY CHARACTERISTICS**



**KEY TO SYMBOLS**

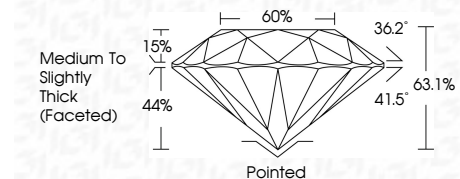
Red symbols indicate internal characteristics.  
Green symbols indicate external characteristics.

**COLOR**

D E F G H I J Faint Very Light Light

**CLARITY**

FL	IF	VS <sup>1-2</sup>	VS <sup>1-2</sup>	SI <sup>1-2</sup>	I <sup>1-3</sup>
Flawless	Internally Flawless	Very Very Slightly Included	Very Slightly Included	Slightly Included	Included



**ADDITIONAL GRADING INFORMATION**

Polish **EXCELLENT**

Symmetry **EXCELLENT**

Fluorescence **NONE**

Inscription(s) **IGI LG795652822**

Comments: This Laboratory Grown Diamond was created by Chemical Vapor Deposition (CVD) growth process. Type IIa



**IGI**



April 25, 2026  
IGI Report No LG795652822  
**ROUND BRILLIANT**

1.57 CARAT  
Color Grade **E**  
Clarity Grade **VS 2**  
Depth **63.1%**  
Table **60%**  
Medium To Slightly Thick (Faceted)

Culet **Pointed**  
Polish **EXCELLENT**  
Symmetry **EXCELLENT**  
Fluorescence **NONE**  
Inscription(s) **IGI LG795652822**

Comments: This Laboratory Grown Diamond was created by Chemical Vapor Deposition (CVD) growth process. Type IIa