



**INTERNATIONAL  
GEMOLOGICAL  
INSTITUTE**

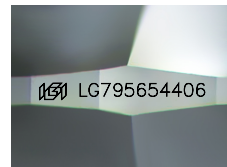
**ELECTRONIC COPY**



April 25, 2026  
IGI Report Number **LG795654406**  
**ROUND BRILLIANT**  
**LABORATORY GROWN DIAMOND**  
**6.11 - 6.14 X 3.64 MM**  
Carat Weight **0.82 CARAT**  
Color Grade **E**  
Clarity Grade **VS 1**  
Cut Grade **EXCELLENT**  
Polish **EXCELLENT**  
Symmetry **EXCELLENT**  
Fluorescence **NONE**  
Inscription(s) **IGI LG795654406**

**LABORATORY GROWN DIAMOND REPORT**

April 25, 2026  
IGI Report Number **LG795654406**  
Description **LABORATORY GROWN DIAMOND**  
Shape and Cutting Style **ROUND BRILLIANT**  
Measurements **6.11 - 6.14 X 3.64 MM**



Sample Image Used

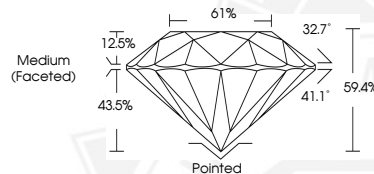
**GRADING RESULTS**

Carat Weight **0.82 CARAT**  
Color Grade **E**  
Clarity Grade **VS 1**  
Cut Grade **EXCELLENT**

**ADDITIONAL GRADING INFORMATION**

Polish **EXCELLENT**  
Symmetry **EXCELLENT**  
Fluorescence **NONE**  
Inscription(s) **IGI LG795654406**

Comments: This Laboratory Grown Diamond was created by Chemical Vapor Deposition (CVD) growth process. Type IIa



April 25, 2026  
IGI Report Number **LG795654406**  
**ROUND BRILLIANT**  
**LABORATORY GROWN DIAMOND**  
**6.11 - 6.14 X 3.64 MM**  
Carat Weight **0.82 CARAT**  
Color Grade **E**  
Clarity Grade **VS 1**  
Cut Grade **EXCELLENT**  
Polish **EXCELLENT**  
Symmetry **EXCELLENT**  
Fluorescence **NONE**  
Inscription(s) **IGI LG795654406**

Comments: This Laboratory Grown Diamond was created by Chemical Vapor Deposition (CVD) growth process. Type IIa



THIS DOCUMENT WAS PRODUCED WITH THE FOLLOWING SECURITY MEASURES: SPECIAL DOCUMENT PAPER, INK SCREENS, WATERMARK, BACKGROUND DESIGNS, HOLOGRAM AND OTHER SECURITY FEATURES NOT LISTED AND DO EXCEED DOCUMENT SECURITY INDUSTRY GUIDELINES.

For terms & conditions and to verify this report, please visit [www.igi.org](http://www.igi.org)