



April 29, 2026

IGI Report Number **LG795658087**

**ROUND BRILLIANT
LABORATORY GROWN DIAMOND
5.79 - 5.82 X 3.66 MM**

Carat Weight	0.75 CARAT
Color Grade	D
Clarity Grade	VVS 2
Cut Grade	EXCELLENT
Polish	EXCELLENT
Symmetry	EXCELLENT
Fluorescence	NONE
Inscription(s)	IGI LG795658087

Comments: As Grown - No indication of post-growth treatment. This Laboratory Grown Diamond was created by High Pressure High Temperature (HPHT) growth process. Type II

LABORATORY GROWN DIAMOND REPORT

April 29, 2026
IGI Report Number **LG795658087**
Description **LABORATORY GROWN DIAMOND**
Shape and Cutting Style **ROUND BRILLIANT**
Measurements **5.79 - 5.82 X 3.66 MM**

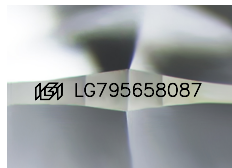
GRADING RESULTS

Carat Weight **0.75 CARAT**
Color Grade **D**
Clarity Grade **VVS 2**
Cut Grade **EXCELLENT**

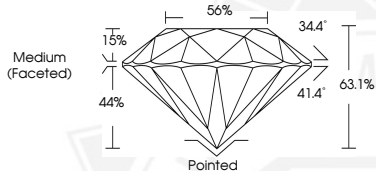
ADDITIONAL GRADING INFORMATION

Polish **EXCELLENT**
Symmetry **EXCELLENT**
Fluorescence **NONE**
Inscription(s) **IGI LG795658087**

Comments: As Grown - No indication of post-growth treatment. This Laboratory Grown Diamond was created by High Pressure High Temperature (HPHT) growth process. Type II



Sample Image Used



April 29, 2026

IGI Report Number **LG795658087**

**ROUND BRILLIANT
LABORATORY GROWN DIAMOND
5.79 - 5.82 X 3.66 MM**

Carat Weight	0.75 CARAT
Color Grade	D
Clarity Grade	VVS 2
Cut Grade	EXCELLENT
Polish	EXCELLENT
Symmetry	EXCELLENT
Fluorescence	NONE
Inscription(s)	IGI LG795658087

Comments: As Grown - No indication of post-growth treatment. This Laboratory Grown Diamond was created by High Pressure High Temperature (HPHT) growth process. Type II

THIS DOCUMENT WAS PRODUCED WITH THE FOLLOWING SECURITY MEASURES: SPECIAL DOCUMENT PAPER, INK SCREENS, WATERMARK, BACKGROUND DESIGNS, HOLOGRAM AND OTHER SECURITY FEATURES NOT LISTED AND DO EXCEED DOCUMENT SECURITY INDUSTRY GUIDELINES.