



**ELECTRONIC COPY**

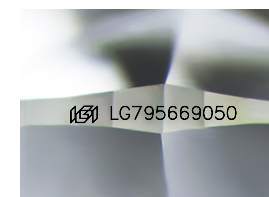
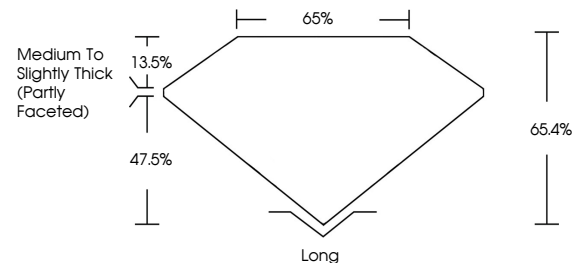
LG795669050  
Report verification at igi.org



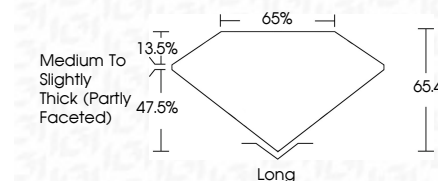
April 25, 2026  
IGI Report Number **LG795669050**  
Description **LABORATORY GROWN DIAMOND**  
Shape and Cutting Style **RECTANGULAR CUSHION MIXED CUT**  
Measurements **10.98 X 7.46 X 4.88 MM**  
**GRADING RESULTS**  
Carat Weight **3.92 CARATS**  
Color Grade **F**  
Clarity Grade **VVS 2**

April 25, 2026  
IGI Report Number **LG795669050**  
Description **LABORATORY GROWN DIAMOND**  
Shape and Cutting Style **RECTANGULAR CUSHION MIXED CUT**  
Measurements **10.98 X 7.46 X 4.88 MM**  
**GRADING RESULTS**  
Carat Weight **3.92 CARATS**  
Color Grade **F**  
Clarity Grade **VVS 2**

**PROPORTIONS**



Sample Image Used



**ADDITIONAL GRADING INFORMATION**

Polish **EXCELLENT**  
Symmetry **EXCELLENT**  
Fluorescence **NONE**  
Inscription(s) **IGI LG795669050**

Comments: This Laboratory Grown Diamond was created by Chemical Vapor Deposition (CVD) growth process.  
Type IIa

**ADDITIONAL GRADING INFORMATION**

Polish **EXCELLENT**  
Symmetry **EXCELLENT**  
Fluorescence **NONE**  
Inscription(s) **IGI LG795669050**  
Comments: This Laboratory Grown Diamond was created by Chemical Vapor Deposition (CVD) growth process.  
Type IIa

**COLOR**

D E F G H I J Faint Very Light Light

**CLARITY**

FL	IF	VVS <sup>1-2</sup>	VS <sup>1-2</sup>	SI <sup>1-2</sup>	I <sup>1-3</sup>
Flawless	Internally Flawless	Very Very Slightly Included	Very Slightly Included	Slightly Included	Included



**IGI**



April 25, 2026  
IGI Report No **LG795669050**  
**RECTANGULAR CUSHION MIXED CUT**  
**10.98 X 7.46 X 4.88 MM**  
Carat Weight **3.92 CARATS**  
Color Grade **F**  
Clarity Grade **VVS 2**  
Table **65.4%**  
Depth **47.5%**  
Girdle **Medium to Slightly Thick (Partly Faceted)**  
Culet **Long**  
Polish **EXCELLENT**  
Symmetry **EXCELLENT**  
Fluorescence **NONE**  
Inscription(s) **IGI LG795669050**  
Comments: This Laboratory Grown Diamond was created by Chemical Vapor Deposition (CVD) growth process.  
Type IIa