



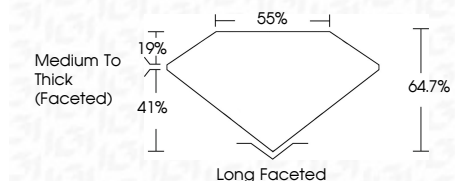
ELECTRONIC COPY

LG795669948 Report verification at igi.org



May 2, 2026 IGI Report Number LG795669948 Description LABORATORY GROWN DIAMOND Shape and Cutting Style CUSHION BRILLIANT Measurements 10.22 X 7.70 X 4.98 MM

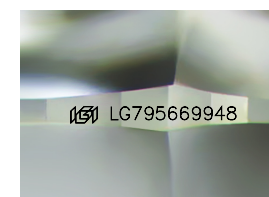
GRADING RESULTS Carat Weight 3.02 CARATS Color Grade E Clarity Grade VVS 2



ADDITIONAL GRADING INFORMATION Polish EXCELLENT Symmetry EXCELLENT Fluorescence NONE Inscription(s) IGI LG795669948 Comments: This Laboratory Grown Diamond was created by Chemical Vapor Deposition (CVD) growth process. Type IIa

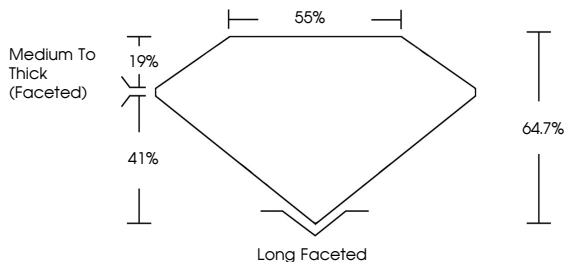


May 2, 2026 IGI Report No LG795669948 CUSHION BRILLIANT 10.22 X 7.70 X 4.98 MM 3.02 CARATS E Color Grade VVS 2 Depth 64.7% Table 41% Girdle Medium To Thick (Faceted) Culet Long Faceted Polish EXCELLENT Symmetry EXCELLENT Fluorescence NONE Inscription(s) IGI LG795669948 Comments: This Laboratory Grown Diamond was created by Chemical Vapor Deposition (CVD) growth process. Type IIa

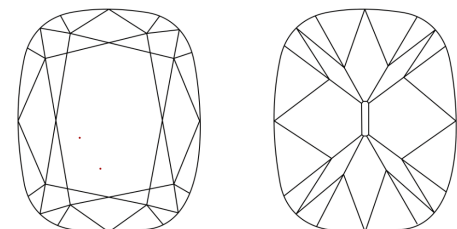


Sample Image Used

PROPORTIONS



CLARITY CHARACTERISTICS



KEY TO SYMBOLS

Red symbols indicate internal characteristics. Green symbols indicate external characteristics.

COLOR

Color scale table with categories D, E, F, G, H, I, J, Faint, Very Light, Light

CLARITY

Clarity scale table with categories FL, IF, VS 1-2, VS 1-2, SI 1-2, I 1-3, Flawless, Internally Flawless, Very Very Slightly Included, Very Slightly Included, Slightly Included, Included

