



ELECTRONIC COPY

LG795671794
Report verification at igi.org



May 8, 2026
IGI Report Number **LG795671794**

Description **LABORATORY GROWN DIAMOND**

Shape and Cutting Style **CUT CORNERED
RECTANGULAR MODIFIED
BRILLIANT**

Measurements **6.55 X 4.57 X 3.38 MM**

GRADING RESULTS

Carat Weight **1.04 CARAT**

Color Grade **FANCY INTENSE YELLOW**

Clarity Grade **VVS 2**

LABORATORY GROWN DIAMOND REPORT

May 8, 2026

IGI Report Number **LG795671794**

Description **LABORATORY GROWN DIAMOND**

Shape and Cutting Style **CUT CORNERED RECTANGULAR
MODIFIED BRILLIANT**

Measurements **6.55 X 4.57 X 3.38 MM**

GRADING RESULTS

Carat Weight **1.04 CARAT**

Color Grade **FANCY INTENSE YELLOW**

Clarity Grade **VVS 2**

ADDITIONAL GRADING INFORMATION

Polish **EXCELLENT**

Symmetry **EXCELLENT**

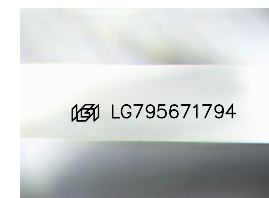
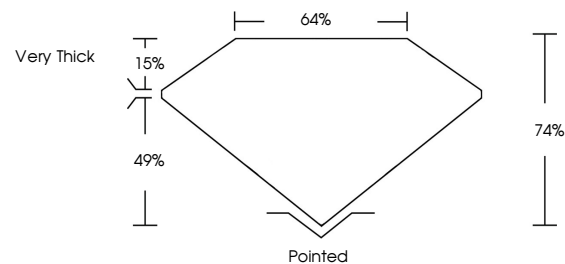
Fluorescence **VERY SLIGHT**

Inscription(s) **IGI LG795671794**

Comments: This Laboratory Grown Diamond was created by Chemical Vapor Deposition (CVD) growth process.

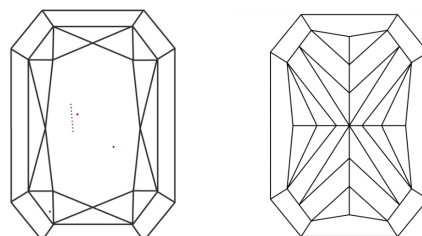
Indications of post-growth treatment.

PROPORTIONS



Sample Image Used

CLARITY CHARACTERISTICS



KEY TO SYMBOLS

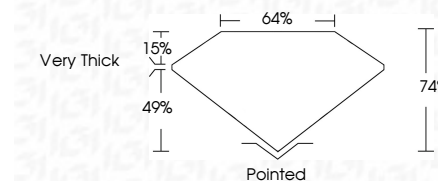
Red symbols indicate internal characteristics.
Green symbols indicate external characteristics.

COLOR

D E F G H I J Faint Very Light Light

CLARITY

FL	IF	VVS ¹⁻²	VS ¹⁻²	SI ¹⁻²	I ¹⁻³
Flawless	Internally Flawless	Very Very Slightly Included	Very Slightly Included	Slightly Included	Included



ADDITIONAL GRADING INFORMATION

Polish **EXCELLENT**

Symmetry **EXCELLENT**

Fluorescence **VERY SLIGHT**

Inscription(s) **IGI LG795671794**

Comments: This Laboratory Grown Diamond was created by Chemical Vapor Deposition (CVD) growth process.
Indications of post-growth treatment.



May 8, 2026
IGI Report No LG795671794
CUT CORNERED RECT. MODIFIED BRILLIANT
6.55 X 4.57 X 3.38 MM
1.04 CARAT
FANCY INTENSE YELLOW
VVS 2
74%
64%
Very Thick
Pointed
EXCELLENT
EXCELLENT
VERY SLIGHT
IGI LG795671794
Comments: This Laboratory Grown Diamond was created by Chemical Vapor Deposition (CVD) growth process.
Indications of post-growth treatment.