



**ELECTRONIC COPY**

LG795673373  
Report verification at igi.org



May 6, 2026

IGI Report Number **LG795673373**

Description **LABORATORY GROWN DIAMOND**

Shape and Cutting Style **ROUND BRILLIANT**

Measurements **7.40 - 7.43 X 4.52 MM**

**GRADING RESULTS**

Carat Weight **1.54 CARAT**

Color Grade **D**

Clarity Grade **VS 2**

Cut Grade **IDEAL**

May 6, 2026

IGI Report Number **LG795673373**

Description **LABORATORY GROWN DIAMOND**

Shape and Cutting Style **ROUND BRILLIANT**

Measurements **7.40 - 7.43 X 4.52 MM**

**GRADING RESULTS**

Carat Weight **1.54 CARAT**

Color Grade **D**

Clarity Grade **VS 2**

Cut Grade **IDEAL**

**ADDITIONAL GRADING INFORMATION**

Polish **EXCELLENT**

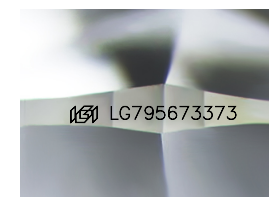
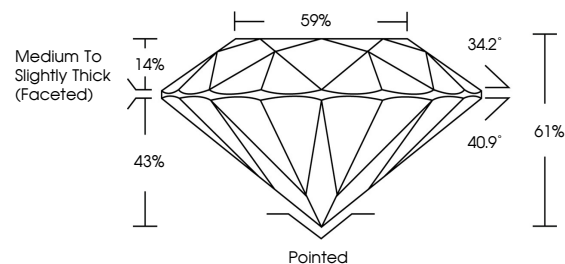
Symmetry **EXCELLENT**

Fluorescence **NONE**

Inscription(s) **LG795673373**

Comments: This Laboratory Grown Diamond was created by Chemical Vapor Deposition (CVD) growth process. Type IIa

**PROPORTIONS**



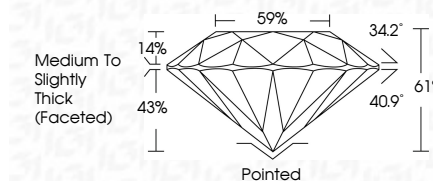
Sample Image Used

**COLOR**

D E F G H I J Faint Very Light Light

**CLARITY**

FL	IF	VS <sup>1-2</sup>	VS <sup>1-2</sup>	SI <sup>1-2</sup>	I <sup>1-3</sup>
Flawless	Internally Flawless	Very Very Slightly Included	Very Slightly Included	Slightly Included	Included



**ADDITIONAL GRADING INFORMATION**

Polish **EXCELLENT**

Symmetry **EXCELLENT**

Fluorescence **NONE**

Inscription(s) **LG795673373**

Comments: This Laboratory Grown Diamond was created by Chemical Vapor Deposition (CVD) growth process. Type IIa



**IGI**



May 6, 2026  
IGI Report No LG795673373  
**ROUND BRILLIANT**

1.54 CARAT  
Carat Weight  
Color Grade **D**  
Clarity Grade **VS 2**  
Cut Grade **IDEAL**  
Depth **61%**  
Table  
Girdle **Medium To Slightly Thick (Faceted)**

Pointed  
Polish **EXCELLENT**  
Symmetry **EXCELLENT**  
Fluorescence **NONE**  
Inscription(s) LG795673373

Comments: This Laboratory Grown Diamond was created by Chemical Vapor Deposition (CVD) growth process. Type IIa