



ELECTRONIC COPY

LG795674389 Report verification at igi.org



May 7, 2026 IGI Report Number LG795674389 Description LABORATORY GROWN DIAMOND Shape and Cutting Style CUT CORNERED RECTANGULAR MODIFIED BRILLIANT Measurements 11.36 X 7.53 X 4.89 MM GRADING RESULTS Carat Weight 3.57 CARATS Color Grade D Clarity Grade VS 1

LABORATORY GROWN DIAMOND REPORT

May 7, 2026 IGI Report Number LG795674389 Description LABORATORY GROWN DIAMOND Shape and Cutting Style CUT CORNERED RECTANGULAR MODIFIED BRILLIANT Measurements 11.36 X 7.53 X 4.89 MM

GRADING RESULTS

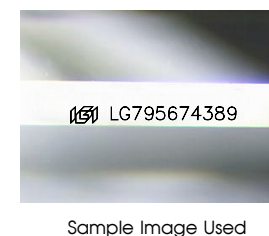
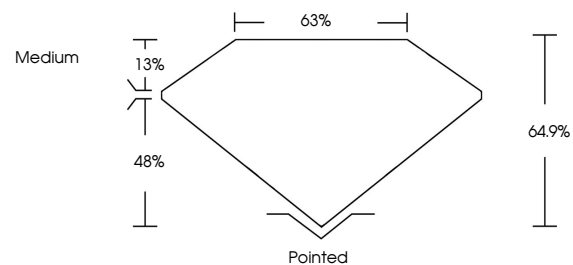
Carat Weight 3.57 CARATS Color Grade D Clarity Grade VS 1

ADDITIONAL GRADING INFORMATION

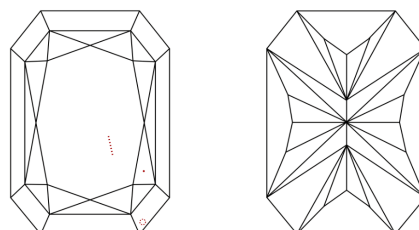
Polish EXCELLENT Symmetry EXCELLENT Fluorescence NONE Inscription(s) LG795674389

Comments: This Laboratory Grown Diamond was created by Chemical Vapor Deposition (CVD) growth process. Type IIa

PROPORTIONS



CLARITY CHARACTERISTICS



KEY TO SYMBOLS

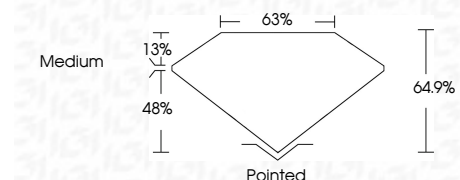
Red symbols indicate internal characteristics. Green symbols indicate external characteristics.

COLOR

D E F G H I J Faint Very Light Light

CLARITY

FL IF VS 1-2 VS 2-3 SI 1-2 I 1-3 Flawless Internally Flawless Very Very Slightly Included Very Slightly Included Slightly Included Included



ADDITIONAL GRADING INFORMATION

Polish EXCELLENT Symmetry EXCELLENT Fluorescence NONE Inscription(s) LG795674389 Comments: This Laboratory Grown Diamond was created by Chemical Vapor Deposition (CVD) growth process. Type IIa



May 7, 2026 IGI Report No LG795674389 CUT CORNERED RECT. MODIFIED BRILLIANT 3.57 CARATS D 64.9% 63% Medium Pointed EXCELLENT EXCELLENT NONE NONE LG795674389 Comments: This Laboratory Grown Diamond was created by Chemical Vapor Deposition (CVD) growth process. Type IIa