



ELECTRONIC COPY

LG795677090
Report verification at igi.org



April 27, 2026

IGI Report Number LG795677090

Description LABORATORY GROWN DIAMOND

Shape and Cutting Style CUSHION MODIFIED BRILLIANT

Measurements 8.66 X 7.06 X 4.51 MM

GRADING RESULTS

Carat Weight 2.06 CARATS

Color Grade E

Clarity Grade VVS 1

Cut Grade EXCELLENT

April 27, 2026
IGI Report Number LG795677090
Description LABORATORY GROWN DIAMOND
Shape and Cutting Style CUSHION MODIFIED BRILLIANT
Measurements 8.66 X 7.06 X 4.51 MM

GRADING RESULTS

Carat Weight 2.06 CARATS

Color Grade E

Clarity Grade VVS 1

Cut Grade EXCELLENT

ADDITIONAL GRADING INFORMATION

Polish EXCELLENT

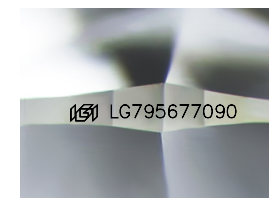
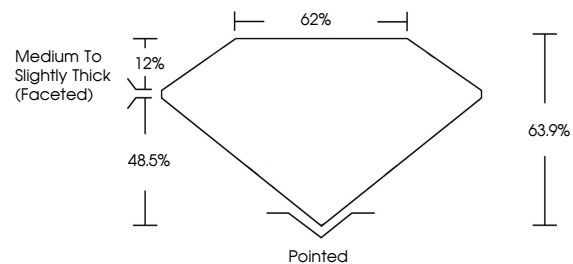
Symmetry EXCELLENT

Fluorescence NONE

Inscription(s) LG795677090

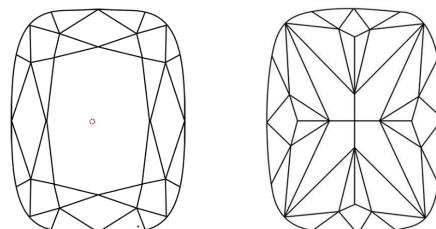
Comments: As Grown - No indication of post-growth treatment. This Laboratory Grown Diamond was created by High Pressure High Temperature (HPHT) growth process. Type II

PROPORTIONS



Sample Image Used

CLARITY CHARACTERISTICS



KEY TO SYMBOLS

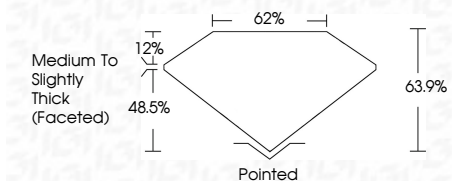
Red symbols indicate internal characteristics. Green symbols indicate external characteristics.

COLOR

D E F G H I J Faint Very Light Light

CLARITY

FL IF VVS 1-2 VS 1-2 SI 1-2 I 1-3
Flawless Internally Flawless Very Very Slightly Included Very Slightly Included Slightly Included Included



ADDITIONAL GRADING INFORMATION

Polish EXCELLENT

Symmetry EXCELLENT

Fluorescence NONE

Inscription(s) LG795677090

Comments: As Grown - No indication of post-growth treatment. This Laboratory Grown Diamond was created by High Pressure High Temperature (HPHT) growth process. Type II



IGI



April 27, 2026
IGI Report No LG795677090
CUSHION MODIFIED BRILLIANT
8.66 X 7.06 X 4.51 MM
2.06 CARATS E
Color Grade EXCELLENT
Clarity Grade VVS 1
Depth 63.9%
Table 62%
Girdle Medium To Slightly Thick (Faceted)
Culet Pointed
Polish EXCELLENT
Symmetry EXCELLENT
Fluorescence NONE
Inscriptions(s) IGI LG795677090
Comments: As Grown - No indication of post-growth treatment. This Laboratory Grown Diamond was created by High Pressure High Temperature (HPHT) growth process. Type II