



ELECTRONIC COPY

LG795688433
Report verification at igi.org



April 29, 2026

IGI Report Number **LG795688433**

Description **LABORATORY GROWN DIAMOND**

Shape and Cutting Style **ROUND BRILLIANT**

Measurements **6.49 - 6.53 X 4.15 MM**

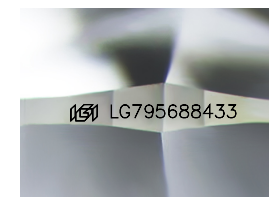
GRADING RESULTS

Carat Weight **1.09 CARAT**

Color Grade **E**

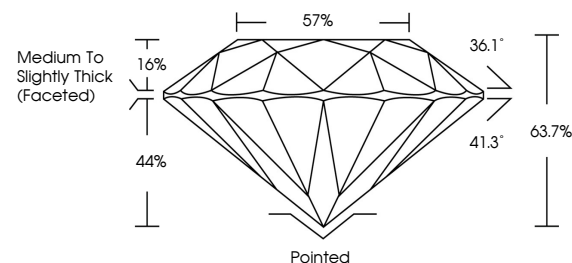
Clarity Grade **VS 1**

Cut Grade **EXCELLENT**

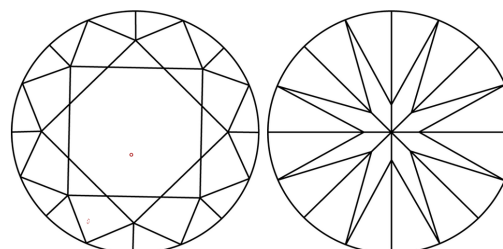


Sample Image Used

PROPORTIONS



CLARITY CHARACTERISTICS



KEY TO SYMBOLS

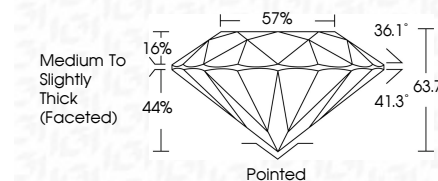
Red symbols indicate internal characteristics.
Green symbols indicate external characteristics.

COLOR

D E F G H I J Faint Very Light Light

CLARITY

| FL | IF | VS ¹⁻² | VS ¹⁻² | SI ¹⁻² | I ¹⁻³ |
|----------|---------------------|-----------------------------|------------------------|-------------------|------------------|
| Flawless | Internally Flawless | Very Very Slightly Included | Very Slightly Included | Slightly Included | Included |



ADDITIONAL GRADING INFORMATION

Polish **EXCELLENT**

Symmetry **EXCELLENT**

Fluorescence **NONE**

Inscription(s) **IGI LG795688433**

Comments: This Laboratory Grown Diamond was created by Chemical Vapor Deposition (CVD) growth process. Type IIa



| | | | | | | | | | | | | | |
|-----------------|---------------------------|-------------|---------------|-----------|-----------|-------|--------|------------------------------------|---------|-----------|-----------|------|-----------------|
| April 29, 2026 | IGI Report No LG795688433 | 1.09 CARAT | E | VS 1 | EXCELLENT | 63.7% | 57% | Medium To Slightly Thick (Faceted) | Pointed | EXCELLENT | EXCELLENT | NONE | IGI LG795688433 |
| ROUND BRILLIANT | 6.49 - 6.53 X 4.15 MM | Color Grade | Clarity Grade | Cut Grade | Depth | Table | Girdle | | | | | | |

Comments: This Laboratory Grown Diamond was created by Chemical Vapor Deposition (CVD) growth process. Type IIa