



ELECTRONIC COPY

LG795689719
Report verification at igi.org



May 6, 2026
IGI Report Number **LG795689719**
Description **LABORATORY GROWN DIAMOND**
Shape and Cutting Style **CUSHION MODIFIED BRILLIANT**
Measurements **12.41 X 9.40 X 6.29 MM**
GRADING RESULTS
Carat Weight **7.02 CARATS**
Color Grade **FANCY VIVID BLuish GREEN**
Clarity Grade **VVS 2**

May 6, 2026
IGI Report Number **LG795689719**
Description **LABORATORY GROWN DIAMOND**
Shape and Cutting Style **CUSHION MODIFIED BRILLIANT**
Measurements **12.41 X 9.40 X 6.29 MM**

GRADING RESULTS

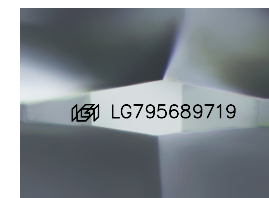
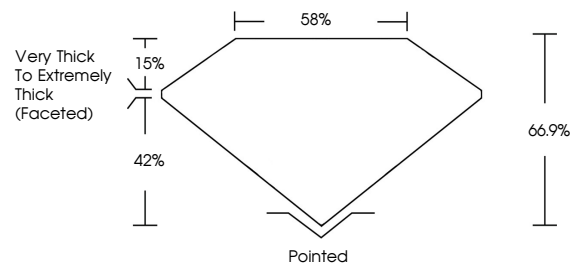
Carat Weight **7.02 CARATS**
Color Grade **FANCY VIVID BLuish GREEN**
Clarity Grade **VVS 2**

ADDITIONAL GRADING INFORMATION

Polish **EXCELLENT**
Symmetry **EXCELLENT**
Fluorescence **NONE**
Inscription(s) **IGI LG795689719**

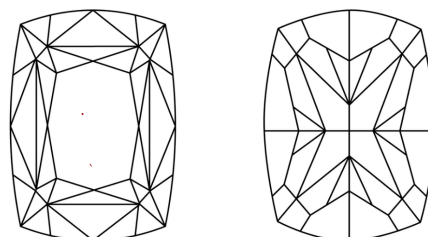
Comments: This Laboratory Grown Diamond was created by Chemical Vapor Deposition (CVD) growth process.
Indications of post-growth treatment.

PROPORTIONS



Sample Image Used

CLARITY CHARACTERISTICS



KEY TO SYMBOLS

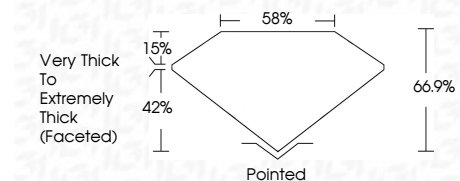
Red symbols indicate internal characteristics.
Green symbols indicate external characteristics.

COLOR

D E F G H I J Faint Very Light Light

CLARITY

FL	IF	VS ¹⁻²	VS ¹⁻²	SI ¹⁻²	I ¹⁻³
Flawless	Internally Flawless	Very Very Slightly Included	Very Slightly Included	Slightly Included	Included



ADDITIONAL GRADING INFORMATION

Polish **EXCELLENT**
Symmetry **EXCELLENT**
Fluorescence **NONE**
Inscription(s) **IGI LG795689719**
Comments: This Laboratory Grown Diamond was created by Chemical Vapor Deposition (CVD) growth process.
Indications of post-growth treatment.



IGI



May 6, 2026
IGI Report No **LG795689719**
CUSHION MODIFIED BRILLIANT
12.41 X 9.40 X 6.29 MM
Carat Weight **7.02 CARATS**
Color Grade **FANCY VIVID BLuish GREEN**
Clarity Grade **VVS 2**
Depth **66.9%**
Table **58%**
Girdle **Very Thick to Extremely Thick (Faceted)**
Culet **Pointed**
Polish **EXCELLENT**
Symmetry **EXCELLENT**
Fluorescence **NONE**
Inscription(s) **IGI LG795689719**

Comments: This Laboratory Grown Diamond was created by Chemical Vapor Deposition (CVD) growth process.
Indications of post-growth treatment.