



**ELECTRONIC COPY**

LG795695838  
Report verification at igi.org



April 30, 2026

IGI Report Number **LG795695838**

Description **LABORATORY GROWN DIAMOND**

Shape and Cutting Style **ROUND BRILLIANT**

Measurements **6.36 - 6.40 X 4.05 MM**

**GRADING RESULTS**

Carat Weight **1.02 CARAT**

Color Grade **E**

Clarity Grade **VS 1**

Cut Grade **EXCELLENT**

April 30, 2026

IGI Report Number **LG795695838**

Description **LABORATORY GROWN DIAMOND**

Shape and Cutting Style **ROUND BRILLIANT**

Measurements **6.36 - 6.40 X 4.05 MM**

**GRADING RESULTS**

Carat Weight **1.02 CARAT**

Color Grade **E**

Clarity Grade **VS 1**

Cut Grade **EXCELLENT**

**ADDITIONAL GRADING INFORMATION**

Polish **EXCELLENT**

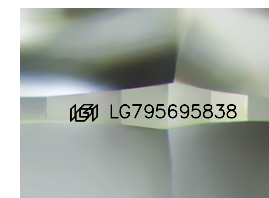
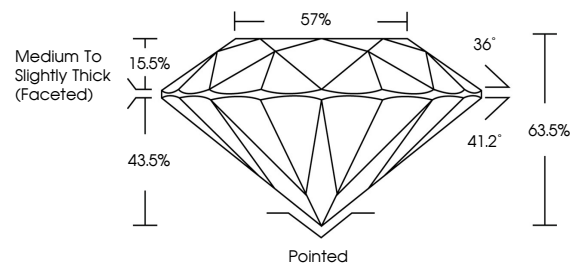
Symmetry **EXCELLENT**

Fluorescence **NONE**

Inscription(s) **LG795695838**

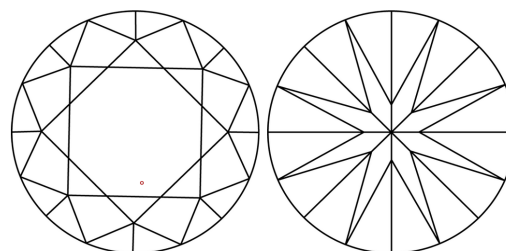
Comments: This Laboratory Grown Diamond was created by Chemical Vapor Deposition (CVD) growth process.  
Type IIa

**PROPORTIONS**



Sample Image Used

**CLARITY CHARACTERISTICS**



**KEY TO SYMBOLS**

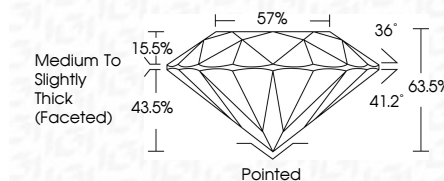
Red symbols indicate internal characteristics.  
Green symbols indicate external characteristics.

**COLOR**

D E F G H I J Faint Very Light Light

**CLARITY**

| FL       | IF                  | VS <sup>1-2</sup>           | VS <sup>1-2</sup>      | SI <sup>1-2</sup> | I <sup>1-3</sup> |
|----------|---------------------|-----------------------------|------------------------|-------------------|------------------|
| Flawless | Internally Flawless | Very Very Slightly Included | Very Slightly Included | Slightly Included | Included         |



**ADDITIONAL GRADING INFORMATION**

Polish **EXCELLENT**

Symmetry **EXCELLENT**

Fluorescence **NONE**

Inscription(s) **LG795695838**

Comments: This Laboratory Grown Diamond was created by Chemical Vapor Deposition (CVD) growth process.  
Type IIa



|                 |                           |             |               |           |           |       |        |                                    |       |         |           |              |                |  |
|-----------------|---------------------------|-------------|---------------|-----------|-----------|-------|--------|------------------------------------|-------|---------|-----------|--------------|----------------|--|
| April 30, 2026  | IGI Report No LG795695838 | 1.02 CARAT  | E             | VS 1      | EXCELLENT | 63.5% | 36°    | 41.2°                              | 57%   | Pointed | EXCELLENT | EXCELLENT    | NONE           | LG795695838  |
| ROUND BRILLIANT | 6.36 - 6.40 X 4.05 MM     | Color Grade | Clarity Grade | Cut Grade | Depth     | Table | Girdle | Medium To Slightly Thick (Faceted) | Culet | Polish  | Symmetry  | Fluorescence | Inscription(s) | Comments: This Laboratory Grown Diamond was created by Chemical Vapor Deposition (CVD) growth process.<br>Type IIa |