



ELECTRONIC COPY

LG797608924 Report verification at igi.org



May 2, 2026 IGI Report Number LG797608924 Description LABORATORY GROWN DIAMOND Shape and Cutting Style PEAR BRILLIANT Measurements 8.97 X 5.71 X 3.66 MM GRADING RESULTS Carat Weight 1.10 CARAT Color Grade D Clarity Grade VVS 2

May 2, 2026 IGI Report Number LG797608924 Description LABORATORY GROWN DIAMOND Shape and Cutting Style PEAR BRILLIANT Measurements 8.97 X 5.71 X 3.66 MM

GRADING RESULTS

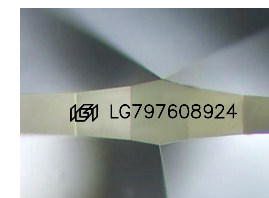
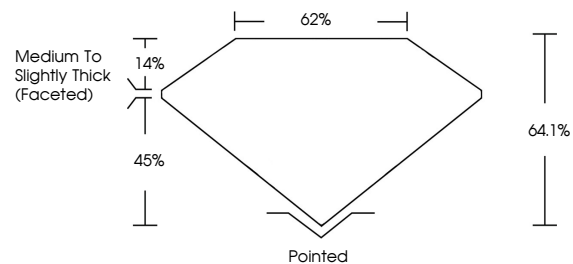
Carat Weight 1.10 CARAT Color Grade D Clarity Grade VVS 2

ADDITIONAL GRADING INFORMATION

Polish EXCELLENT Symmetry EXCELLENT Fluorescence NONE Inscription(s) IGI LG797608924

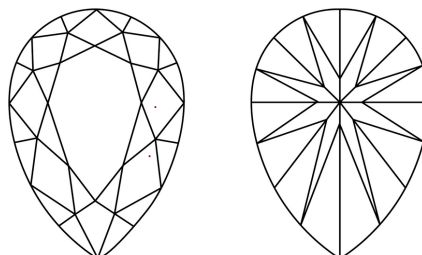
Comments: This Laboratory Grown Diamond was created by Chemical Vapor Deposition (CVD) growth process. Type IIa

PROPORTIONS



Sample Image Used

CLARITY CHARACTERISTICS



KEY TO SYMBOLS

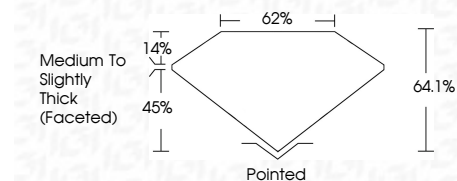
Red symbols indicate internal characteristics. Green symbols indicate external characteristics.

COLOR

D E F G H I J Faint Very Light Light

CLARITY

FL IF VS 1-2 VS 1-2 SI 1-2 I 1-3 Flawless Internally Flawless Very Very Slightly Included Very Slightly Included Slightly Included Included



ADDITIONAL GRADING INFORMATION

Polish EXCELLENT Symmetry EXCELLENT Fluorescence NONE Inscription(s) IGI LG797608924 Comments: This Laboratory Grown Diamond was created by Chemical Vapor Deposition (CVD) growth process. Type IIa



May 2, 2026 IGI Report No LG797608924 PEAR BRILLIANT 1.10 CARAT D 8.97 X 5.71 X 3.66 MM Color Grade D Clarity Grade VVS 2 Table 64.1% Girdle 62% Medium to Slightly Thick (Faceted) Pointed EXCELLENT EXCELLENT NONE NONE IGI LG797608924 Comments: This Laboratory Grown Diamond was created by Chemical Vapor Deposition (CVD) growth process. Type IIa