



ELECTRONIC COPY

LG797610324 Report verification at igi.org



May 5, 2026 IGI Report Number LG797610324 Description LABORATORY GROWN DIAMOND Shape and Cutting Style CUSHION MODIFIED BRILLIANT Measurements 8.82 X 6.77 X 4.50 MM GRADING RESULTS Carat Weight 2.08 CARATS Color Grade E Clarity Grade VS 1

May 5, 2026 IGI Report Number LG797610324 Description LABORATORY GROWN DIAMOND Shape and Cutting Style CUSHION MODIFIED BRILLIANT Measurements 8.82 X 6.77 X 4.50 MM

GRADING RESULTS

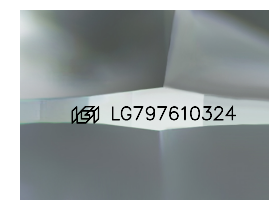
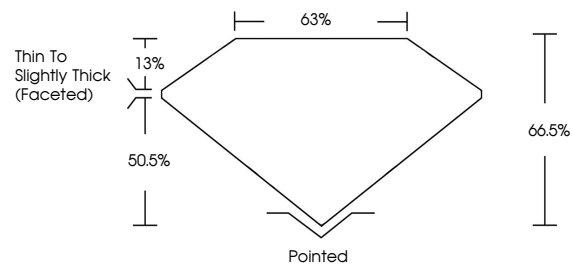
Carat Weight 2.08 CARATS Color Grade E Clarity Grade VS 1

ADDITIONAL GRADING INFORMATION

Polish EXCELLENT Symmetry EXCELLENT Fluorescence NONE Inscription(s) IGI LG797610324

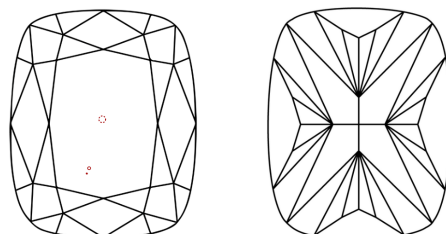
Comments: This Laboratory Grown Diamond was created by Chemical Vapor Deposition (CVD) growth process. Type IIa

PROPORTIONS



Sample Image Used

CLARITY CHARACTERISTICS



KEY TO SYMBOLS

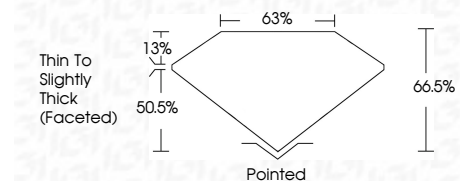
Red symbols indicate internal characteristics. Green symbols indicate external characteristics.

COLOR

D E F G H I J Faint Very Light Light

CLARITY

FL IF VS 1-2 VS 2-3 SI 1-2 I 1-3 Flawless Internally Flawless Very Very Slightly Included Very Slightly Included Slightly Included Included



ADDITIONAL GRADING INFORMATION

Polish EXCELLENT Symmetry EXCELLENT Fluorescence NONE Inscription(s) IGI LG797610324 Comments: This Laboratory Grown Diamond was created by Chemical Vapor Deposition (CVD) growth process. Type IIa



IGI



May 5, 2026 IGI Report No LG797610324 CUSHION MODIFIED BRILLIANT 8.82 X 6.77 X 4.50 MM 2.08 CARATS E VS 1 66.5% 63% Thin To Slightly Thick (Faceted) Pointed EXCELLENT EXCELLENT NONE NONE IGI LG797610324

Comments: This Laboratory Grown Diamond was created by Chemical Vapor Deposition (CVD) growth process. Type IIa