



ELECTRONIC COPY

LABORATORY GROWN DIAMOND REPORT

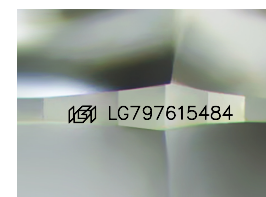
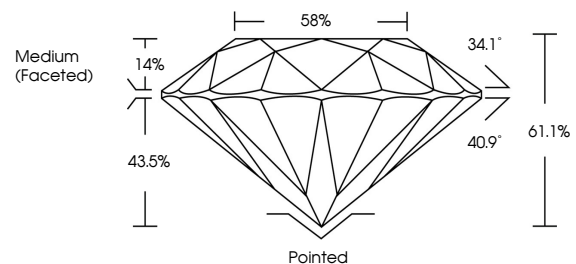
May 12, 2026
 IGI Report Number **LG797615484**
 Description **LABORATORY GROWN DIAMOND**
 Shape and Cutting Style **ROUND BRILLIANT**
 Measurements **7.41 - 7.44 X 4.54 MM**
GRADING RESULTS
 Carat Weight **1.54 CARAT**
 Color Grade **E**
 Clarity Grade **VS 1**
 Cut Grade **IDEAL**

ADDITIONAL GRADING INFORMATION

Polish **EXCELLENT**
 Symmetry **EXCELLENT**
 Fluorescence **NONE**
 Inscription(s) **IGI LG797615484**

Comments: This Laboratory Grown Diamond was created by Chemical Vapor Deposition (CVD) growth process. Type IIa

PROPORTIONS



Sample Image Used

COLOR

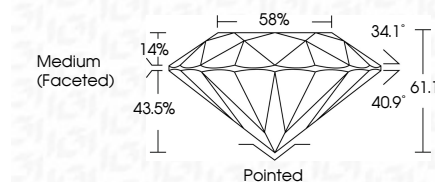
D E F G H I J Faint Very Light Light

CLARITY

FL	IF	VS ¹⁻²	VS ¹⁻²	SI ¹⁻²	I ¹⁻³
Flawless	Internally Flawless	Very Very Slightly Included	Very Slightly Included	Slightly Included	Included



May 12, 2026
 IGI Report Number **LG797615484**
 Description **LABORATORY GROWN DIAMOND**
 Shape and Cutting Style **ROUND BRILLIANT**
 Measurements **7.41 - 7.44 X 4.54 MM**
GRADING RESULTS
 Carat Weight **1.54 CARAT**
 Color Grade **E**
 Clarity Grade **VS 1**
 Cut Grade **IDEAL**



ADDITIONAL GRADING INFORMATION

Polish **EXCELLENT**
 Symmetry **EXCELLENT**
 Fluorescence **NONE**
 Inscription(s) **IGI LG797615484**
 Comments: This Laboratory Grown Diamond was created by Chemical Vapor Deposition (CVD) growth process. Type IIa



IGI



May 12, 2026
 IGI Report No LG797615484
ROUND BRILLIANT
 7.41 - 7.44 X 4.54 MM
 1.54 CARAT
 E
 VS 1
 IDEAL
 61.1%
 58%
 Medium (Faceted)
 Pointed
 EXCELLENT
 EXCELLENT
 NONE
 NONE
 IGI LG797615484
 Comments: This Laboratory Grown Diamond was created by Chemical Vapor Deposition (CVD) growth process. Type IIa