



ELECTRONIC COPY

LG797617450
Report verification at igi.org



May 9, 2026
IGI Report Number LG797617450
Description LABORATORY GROWN DIAMOND
Shape and Cutting Style CUT CORNERED RECTANGULAR MODIFIED BRILLIANT
Measurements 7.73 X 5.63 X 3.86 MM
GRADING RESULTS
Carat Weight 1.51 CARAT
Color Grade FANCY VIVID BLUE
Clarity Grade VVS 2

LABORATORY GROWN DIAMOND REPORT

May 9, 2026
IGI Report Number LG797617450
Description LABORATORY GROWN DIAMOND
Shape and Cutting Style CUT CORNERED RECTANGULAR MODIFIED BRILLIANT
Measurements 7.73 X 5.63 X 3.86 MM

GRADING RESULTS

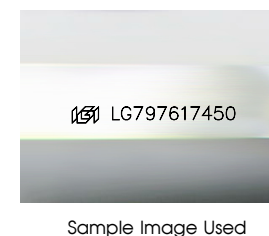
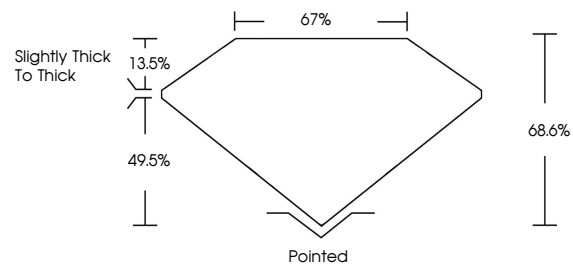
Carat Weight 1.51 CARAT
Color Grade FANCY VIVID BLUE
Clarity Grade VVS 2

ADDITIONAL GRADING INFORMATION

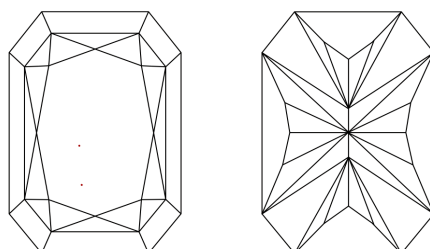
Polish EXCELLENT
Symmetry EXCELLENT
Fluorescence NONE
Inscription(s) LG797617450

Comments: This Laboratory Grown Diamond was created by Chemical Vapor Deposition (CVD) growth process.
Indications of post-growth treatment.

PROPORTIONS



CLARITY CHARACTERISTICS



KEY TO SYMBOLS

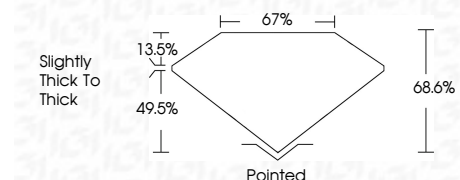
Red symbols indicate internal characteristics.
Green symbols indicate external characteristics.

COLOR

D E F G H I J Faint Very Light Light

CLARITY

FL IF VVS 1-2 VS 1-2 SI 1-2 I 1-3
Flawless Internally Flawless Very Very Slightly Included Very Slightly Included Slightly Included Included



ADDITIONAL GRADING INFORMATION

Polish EXCELLENT
Symmetry EXCELLENT
Fluorescence NONE
Inscription(s) LG797617450
Comments: This Laboratory Grown Diamond was created by Chemical Vapor Deposition (CVD) growth process.
Indications of post-growth treatment.



May 9, 2026
IGI Report No LG797617450
CUT CORNERED RECT. MODIFIED BRILLIANT
1.51 CARAT
FANCY VIVID BLUE
VVS 2
68.6%
67%
Slightly thick to thick
Pointed
EXCELLENT
EXCELLENT
NONE
Inscription(s) LG797617450
Comments: This Laboratory Grown Diamond was created by Chemical Vapor Deposition (CVD) growth process.
Indications of post-growth treatment.