



ELECTRONIC COPY

LG797619675 Report verification at igi.org



May 2, 2026 IGI Report Number LG797619675 Description LABORATORY GROWN DIAMOND Shape and Cutting Style CUT CORNERED RECTANGULAR MODIFIED BRILLIANT Measurements 7.44 X 5.15 X 3.31 MM GRADING RESULTS Carat Weight 1.08 CARAT Color Grade FANCY VIVID BLUE Clarity Grade VS 2

May 2, 2026 IGI Report Number LG797619675 Description LABORATORY GROWN DIAMOND Shape and Cutting Style CUT CORNERED RECTANGULAR MODIFIED BRILLIANT Measurements 7.44 X 5.15 X 3.31 MM

GRADING RESULTS

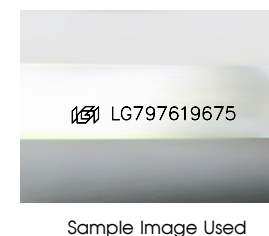
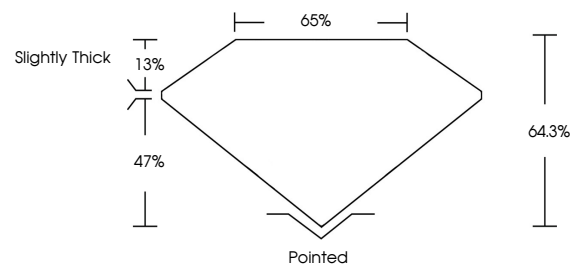
Carat Weight 1.08 CARAT Color Grade FANCY VIVID BLUE Clarity Grade VS 2

ADDITIONAL GRADING INFORMATION

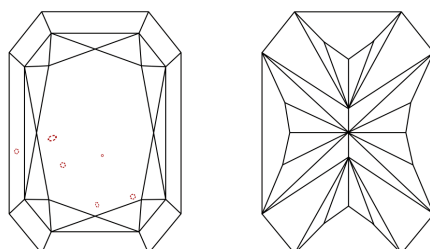
Polish EXCELLENT Symmetry EXCELLENT Fluorescence NONE Inscription(s) LG797619675

Comments: This Laboratory Grown Diamond was created by Chemical Vapor Deposition (CVD) growth process. Indications of post-growth treatment.

PROPORTIONS



CLARITY CHARACTERISTICS



KEY TO SYMBOLS

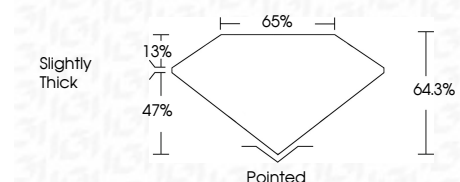
Red symbols indicate internal characteristics. Green symbols indicate external characteristics.

COLOR

D E F G H I J Faint Very Light Light

CLARITY

FL IF VS 1-2 VS 1-2 SI 1-2 I 1-3 Flawless Internally Flawless Very Very Slightly Included Very Slightly Included Slightly Included Included



ADDITIONAL GRADING INFORMATION

Polish EXCELLENT Symmetry EXCELLENT Fluorescence NONE Inscription(s) LG797619675 Comments: This Laboratory Grown Diamond was created by Chemical Vapor Deposition (CVD) growth process. Indications of post-growth treatment.



May 2, 2026 IGI Report No LG797619675 CUT CORNERED RECT. MODIFIED BRILLIANT 1.08 CARAT FANCY VIVID BLUE VS 2 64.3% 65% Slightly Thick Pointed EXCELLENT EXCELLENT NONE NONE LG797619675 Comments: This Laboratory Grown Diamond was created by Chemical Vapor Deposition (CVD) growth process. Indications of post-growth treatment.