



**ELECTRONIC COPY**

LG797621362  
Report verification at igi.org



May 5, 2026

IGI Report Number **LG797621362**

Description **LABORATORY GROWN DIAMOND**

Shape and Cutting Style **CUSHION BRILLIANT**

Measurements **11.68 X 9.18 X 5.61 MM**

**GRADING RESULTS**

Carat Weight **5.02 CARATS**

Color Grade **FANCY INTENSE BLUE**

Clarity Grade **VS 1**

May 5, 2026

IGI Report Number **LG797621362**

Description **LABORATORY GROWN DIAMOND**

Shape and Cutting Style **CUSHION BRILLIANT**

Measurements **11.68 X 9.18 X 5.61 MM**

**GRADING RESULTS**

Carat Weight **5.02 CARATS**

Color Grade **FANCY INTENSE BLUE**

Clarity Grade **VS 1**

**ADDITIONAL GRADING INFORMATION**

Polish **EXCELLENT**

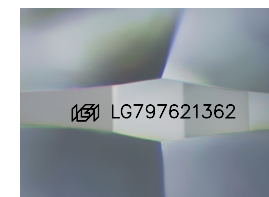
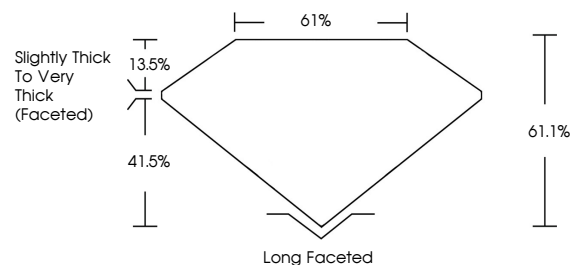
Symmetry **EXCELLENT**

Fluorescence **NONE**

Inscription(s) **LG797621362**

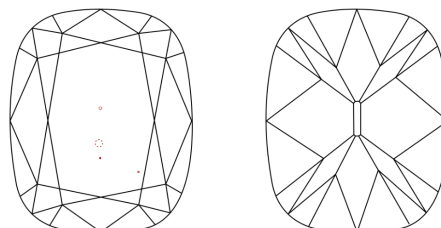
Comments: This Laboratory Grown Diamond was created by Chemical Vapor Deposition (CVD) growth process.  
Indications of post-growth treatment.

**PROPORTIONS**



Sample Image Used

**CLARITY CHARACTERISTICS**



**KEY TO SYMBOLS**

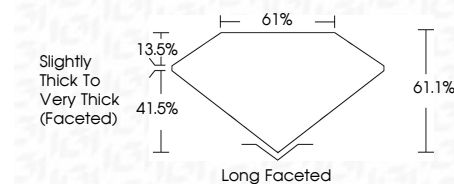
Red symbols indicate internal characteristics.  
Green symbols indicate external characteristics.

**COLOR**

D E F G H I J Faint Very Light Light

**CLARITY**

FL	IF	VS <sup>1-2</sup>	VS <sup>1-2</sup>	SI <sup>1-2</sup>	I <sup>1-3</sup>
Flawless	Internally Flawless	Very Very Slightly Included	Very Slightly Included	Slightly Included	Included



**ADDITIONAL GRADING INFORMATION**

Polish **EXCELLENT**

Symmetry **EXCELLENT**

Fluorescence **NONE**

Inscription(s) **LG797621362**

Comments: This Laboratory Grown Diamond was created by Chemical Vapor Deposition (CVD) growth process.  
Indications of post-growth treatment.



**IGI**



May 5, 2026  
IGI Report No **LG797621362**  
**CUSHION BRILLIANT**  
**5.02 CARATS**  
**FANCY INTENSE BLUE**  
Carat Weight  
Color Grade  
Clarity Grade **VS 1**  
Depth **61.1%**  
Table **61%**  
Girdle **Slightly Thick To Very Thick (Faceted)**  
Culet **Long Faceted**  
Polish **EXCELLENT**  
Symmetry **EXCELLENT**  
Fluorescence **NONE**  
Inscription(s) **LG797621362**

Comments: This Laboratory Grown Diamond was created by Chemical Vapor Deposition (CVD) growth process.  
Indications of post-growth treatment.