



ELECTRONIC COPY

LG797625842
Report verification at igi.org



May 7, 2026

IGI Report Number **LG797625842**

Description **LABORATORY GROWN DIAMOND**

Shape and Cutting Style **HEXAGONAL STEP CUT**

Measurements **9.88 X 8.43 X 4.90 MM**

GRADING RESULTS

Carat Weight **3.02 CARATS**

Color Grade **FANCY INTENSE BLUE**

Clarity Grade **VVS 2**

May 7, 2026

IGI Report Number **LG797625842**

Description **LABORATORY GROWN DIAMOND**

Shape and Cutting Style **HEXAGONAL STEP CUT**

Measurements **9.88 X 8.43 X 4.90 MM**

GRADING RESULTS

Carat Weight **3.02 CARATS**

Color Grade **FANCY INTENSE BLUE**

Clarity Grade **VVS 2**

ADDITIONAL GRADING INFORMATION

Polish **EXCELLENT**

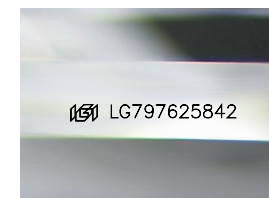
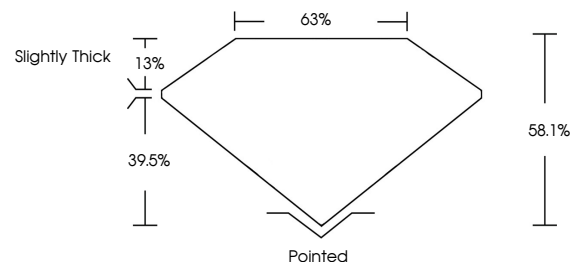
Symmetry **EXCELLENT**

Fluorescence **NONE**

Inscription(s) **IGI LG797625842**

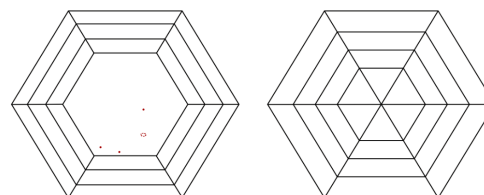
Comments: This Laboratory Grown Diamond was created by Chemical Vapor Deposition (CVD) growth process.
Indications of post-growth treatment.

PROPORTIONS



Sample Image Used

CLARITY CHARACTERISTICS



KEY TO SYMBOLS

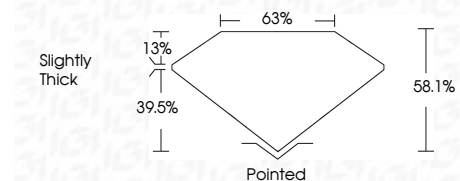
Red symbols indicate internal characteristics.
Green symbols indicate external characteristics.

COLOR

D E F G H I J Faint Very Light Light

CLARITY

FL	IF	VVS ¹⁻²	VS ¹⁻²	SI ¹⁻²	I ¹⁻³
Flawless	Internally Flawless	Very Very Slightly Included	Very Slightly Included	Slightly Included	Included



ADDITIONAL GRADING INFORMATION

Polish **EXCELLENT**

Symmetry **EXCELLENT**

Fluorescence **NONE**

Inscription(s) **IGI LG797625842**

Comments: This Laboratory Grown Diamond was created by Chemical Vapor Deposition (CVD) growth process.
Indications of post-growth treatment.



IGI



May 7, 2026	IGI Report No LG797625842	HEXAGONAL STEP CUT	3.02 CARATS	FANCY INTENSE BLUE	VVS 2	63%	Slightly Thick	Pointed	EXCELLENT	EXCELLENT	NONE	IGI LG797625842
9.88 X 8.43 X 4.90 MM	Carat Weight	Color Grade	Clarity Grade	Depth	Table	Graile	Culet	Polish	Symmetry	Fluorescence	Inscription(s)	

Comments: This Laboratory Grown Diamond was created by Chemical Vapor Deposition (CVD) growth process.
Indications of post-growth treatment.