



ELECTRONIC COPY

LABORATORY GROWN DIAMOND REPORT

May 5, 2026 IGI Report Number LG797625896 Description LABORATORY GROWN DIAMOND Shape and Cutting Style CUT CORNERED RECTANGULAR MODIFIED BRILLIANT Measurements 8.95 X 6.39 X 4.28 MM

GRADING RESULTS

Carat Weight 2.06 CARATS Color Grade F Clarity Grade VS 1

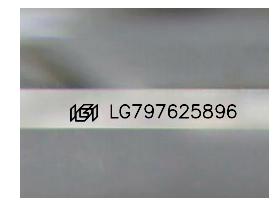
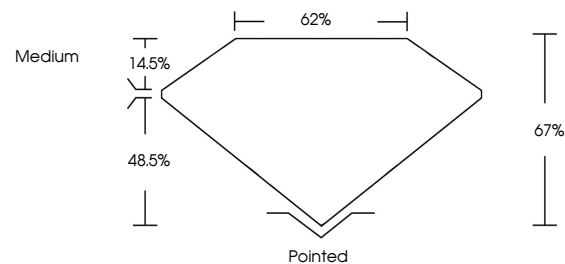
ADDITIONAL GRADING INFORMATION

Polish EXCELLENT Symmetry EXCELLENT Fluorescence NONE

Inscription(s) IGI LG797625896

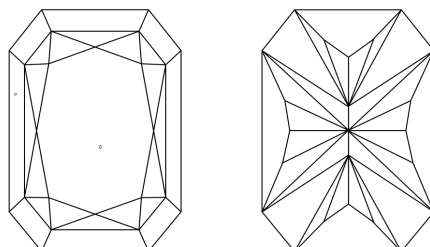
Comments: This Laboratory Grown Diamond was created by Chemical Vapor Deposition (CVD) growth process. Type IIa

PROPORTIONS



Sample Image Used

CLARITY CHARACTERISTICS



KEY TO SYMBOLS

Red symbols indicate internal characteristics. Green symbols indicate external characteristics.

COLOR

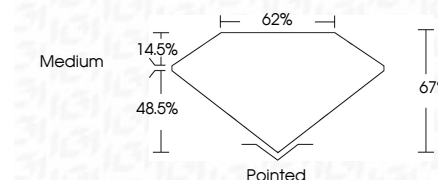
D E F G H I J Faint Very Light Light

CLARITY

FL IF VS 1-2 VS 2-3 SI 1-2 I 1-3 Flawless Internally Flawless Very Very Slightly Included Very Slightly Included Slightly Included Included



May 5, 2026 IGI Report Number LG797625896 Description LABORATORY GROWN DIAMOND Shape and Cutting Style CUT CORNERED RECTANGULAR MODIFIED BRILLIANT Measurements 8.95 X 6.39 X 4.28 MM GRADING RESULTS Carat Weight 2.06 CARATS Color Grade F Clarity Grade VS 1



ADDITIONAL GRADING INFORMATION

Polish EXCELLENT Symmetry EXCELLENT Fluorescence NONE Inscription(s) IGI LG797625896 Comments: This Laboratory Grown Diamond was created by Chemical Vapor Deposition (CVD) growth process. Type IIa



May 5, 2026 IGI Report No LG797625896 CUT CORNERED RECT. MODIFIED BRILLIANT 8.95 X 6.39 X 4.28 MM 2.06 CARATS F VS 1 67% 62% Medium Polished EXCELLENT EXCELLENT NONE NONE IGI LG797625896 Comments: This Laboratory Grown Diamond was created by Chemical Vapor Deposition (CVD) growth process. Type IIa