



**ELECTRONIC COPY**

LG797630458  
Report verification at igi.org



May 9, 2026

IGI Report Number **LG797630458**

Description **LABORATORY GROWN DIAMOND**

Shape and Cutting Style **MARQUISE BRILLIANT**

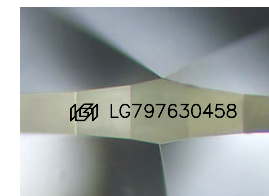
Measurements **11.12 X 5.58 X 3.51 MM**

**GRADING RESULTS**

Carat Weight **1.27 CARAT**

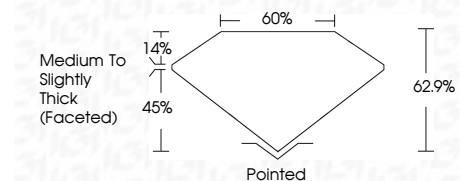
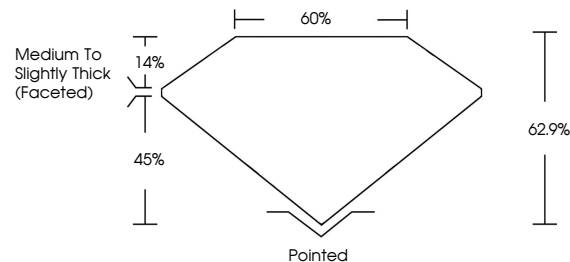
Color Grade **E**

Clarity Grade **VVS 2**



Sample Image Used

**PROPORTIONS**



**ADDITIONAL GRADING INFORMATION**

Polish **EXCELLENT**

Symmetry **EXCELLENT**

Fluorescence **NONE**

Inscription(s) **IGI LG797630458**

Comments: This Laboratory Grown Diamond was created by Chemical Vapor Deposition (CVD) growth process. Type IIa



**COLOR**

D E F G H I J Faint Very Light Light

**CLARITY**

FL	IF	VS <sup>1-2</sup>	VS <sup>1-2</sup>	SI <sup>1-2</sup>	I <sup>1-3</sup>
Flawless	Internally Flawless	Very Very Slightly Included	Very Slightly Included	Slightly Included	Included



May 9, 2026  
IGI Report No LG797630458  
**MARQUISE BRILLIANT**

11.12 X 5.58 X 3.51 MM  
1.27 CARAT  
Color Grade **E**  
Clarity Grade **VVS 2**  
Table **62.9%**  
Girdle **65%**  
Medium to Slightly Thick (Faceted)

Culet **Pointed**  
Polish **EXCELLENT**  
Symmetry **EXCELLENT**  
Fluorescence **NONE**  
Inscription(s) **IGI LG797630458**

Comments: This Laboratory Grown Diamond was created by Chemical Vapor Deposition (CVD) growth process. Type IIa