



ELECTRONIC COPY

LG797632754
Report verification at igi.org



May 5, 2026

IGI Report Number **LG797632754**

Description **LABORATORY GROWN DIAMOND**

Shape and Cutting Style **ROUND BRILLIANT**

Measurements **6.45 - 6.51 X 3.98 MM**

GRADING RESULTS

Carat Weight **1.01 CARAT**

Color Grade **E**

Clarity Grade **VVS 2**

Cut Grade **IDEAL**

May 5, 2026
IGI Report Number **LG797632754**
Description **LABORATORY GROWN DIAMOND**
Shape and Cutting Style **ROUND BRILLIANT**
Measurements **6.45 - 6.51 X 3.98 MM**

GRADING RESULTS

Carat Weight **1.01 CARAT**

Color Grade **E**

Clarity Grade **VVS 2**

Cut Grade **IDEAL**

ADDITIONAL GRADING INFORMATION

Polish **EXCELLENT**

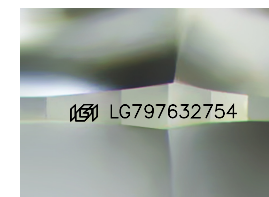
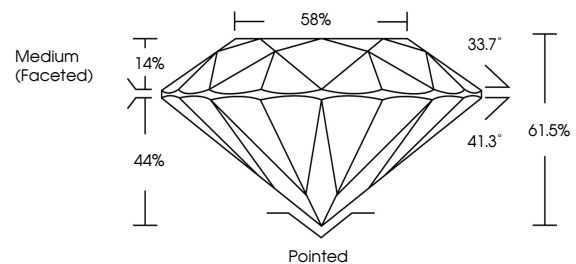
Symmetry **EXCELLENT**

Fluorescence **NONE**

Inscription(s) **IGI LG797632754**

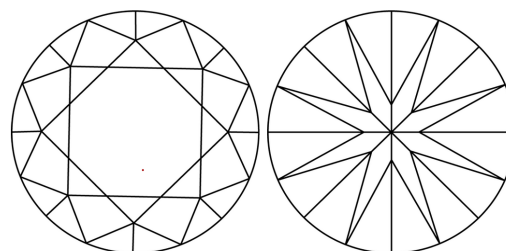
Comments: This Laboratory Grown Diamond was created by Chemical Vapor Deposition (CVD) growth process.
Type IIa

PROPORTIONS



Sample Image Used

CLARITY CHARACTERISTICS



KEY TO SYMBOLS

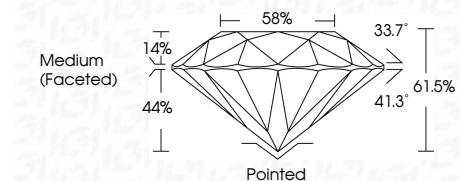
Red symbols indicate internal characteristics.
Green symbols indicate external characteristics.

COLOR

D E F G H I J Faint Very Light Light

CLARITY

FL	IF	VVS ¹⁻²	VS ¹⁻²	SI ¹⁻²	I ¹⁻³
Flawless	Internally Flawless	Very Very Slightly Included	Very Slightly Included	Slightly Included	Included



ADDITIONAL GRADING INFORMATION

Polish **EXCELLENT**

Symmetry **EXCELLENT**

Fluorescence **NONE**

Inscription(s) **IGI LG797632754**

Comments: This Laboratory Grown Diamond was created by Chemical Vapor Deposition (CVD) growth process.
Type IIa



May 5, 2026	IGI Report No LG797632754	1.01 CARAT	E	Pointed	EXCELLENT	EXCELLENT	NONE	IGI LG797632754
ROUND BRILLIANT	6.45 - 6.51 X 3.98 MM	Color Grade	VVS 2	Cut Grade	IDEAL	61.5%	58%	Medium (Faceted)
		Clarity Grade	VVS 2	Polish	EXCELLENT	Symmetry	EXCELLENT	NONE
		Depth	61.5%	Fluorescence	NONE	Inscription(s)	IGI LG797632754	
		Table	14%	Comments: This Laboratory Grown Diamond was created by Chemical Vapor Deposition (CVD) growth process.				Type IIa
		Girdle	Medium (Faceted)					